



## BAD (Ab-134) Antibody

E11-0822B

(P-K-S<sup>P</sup>-A-G).**Catalog Number:** E11-0822B**Concentration:** 1mg/ml**Swiss-Prot No.:** Q92934

**Other Names:** BAD, BBC6, BCL2L8, Bcl- XL/Bcl-2 associated death promoter, Bcl-2 binding component 6, Bcl-2-like 8 protein, Bcl-xL/Bcl-2 associated death promoter, Bcl2-antagonist of cell death

**Storage/Stability:** Store at -20°C/1 year

**Form of Antibody:** Rabbit IgG in phosphate buffered saline (without Mg<sup>2+</sup> and Ca<sup>2+</sup>), pH 7.4, 150mM NaCl, 0.02% sodium azide and 50% glycerol.

**Immunogen:** The antiserum was produced against synthesized non-phosphopeptide derived from human BAD around the phosphorylation site of serine 134

**Purification:** The antibody was affinity-purified from rabbit antiserum by affinity-chromatography using epitope-specific immunogen.

**Specificity:** BAD (Ab-134) antibody detects endogenous levels of total BAD protein.

**Reactivity:** Human, Mouse, Rat

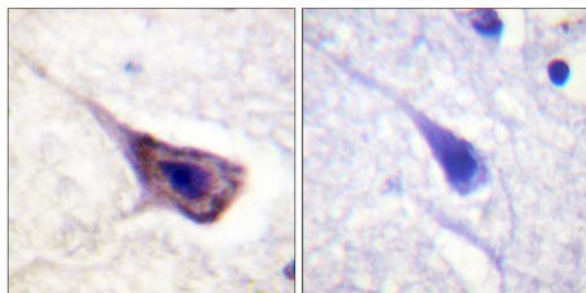
**Applications:** WB: 1:500~1:1000 IHC: 1:50~1:100  
ELISA: 1:1000

**References:**

Ottile S., J. Biol. Chem. 272:30866-30872(1997).

Wang H.-G., Cell 87:629-638(1996).

Petros A.M., Protein Sci. 9:2528-2534(2000).

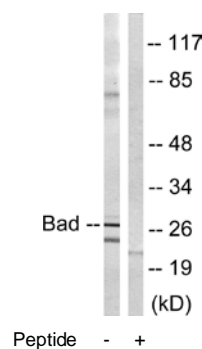


Peptide

-

+

Immunohistochemistry analysis of paraffin-embedded human brain tissue using BAD (Ab-134) antibody.



Peptide

-

+

Western blot analysis of extracts from mouse liver cells, using BAD (Ab-134) antibody.

**For Research Use Only**