



C/EBP- α (Phospho-Thr226) Antibody

E11-0825A

Catalog Number: E11-0825A**Concentration:** 1mg/ml**Swiss-Prot No.:** P49715**Other Names:** C/EBP alpha, CCAAT/enhancer binding protein alpha, CEBPA**All Sites:** Human: Thr226; Mouse: Thr222; Rat: Thr222**Storage/Stability:** Store at -20 °C/1 year**Form of Antibody:** Rabbit IgG in phosphate buffered saline (without Mg^{2+} and Ca^{2+}), pH 7.4, 150mM NaCl, 0.02% sodium azide and 50% glycerol.**Immunogen:** The antiserum was produced against synthesized phosphopeptide derived from human C/EBP- α around the phosphorylation site of threonine 226 (H-P-T^P-P-P).**Purification:** The antibody was affinity-purified from rabbit antiserum by affinity-chromatography using

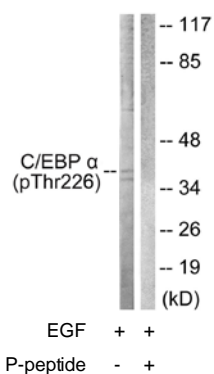
epitope-specific phosphopeptide. The antibody against non-phosphopeptide was removed by chromatography using non-phosphopeptide corresponding to the phosphorylation site.

Specificity: C/EBP- α (Phospho-Thr226) antibody detects endogenous levels of C/EBP- α only when phosphorylated at threonine 226.**Reactivity:** Human, Mouse, Rat**Applications:** WB: 1:500~1:1000 ELISA: 1:10000**References:**

Antonson P., *Biochem. Biophys. Res. Commun.* 215:106-113(1995).

Swart G.W.M., *Biol. Chem. Hoppe-Seyler* 378:373-379(1997).

Choi B.H., *J. Biol. Chem.* 274:2858-2865(1999).



Western blot analysis of extracts from COS7 cells, treated with EGF (200ng/ml, 30mins), using C/EBP- α (Phospho-Thr226) antibody.

For Research Use Only