



Calcium Sensing Receptor (Phospho-Thr888) Antibody

E11-0828A

Catalog Number: E11-0828A

Concentration: 1mg/ml

Swiss-Prot No.: P41180

Other Names: CASR, CaSR, Extracellular calcium-sensing receptor precursor, GPRC2A, PCAR1, Parathyroid Cell calcium-sensing receptor

All Sites: Human: Thr888; Mouse: Thr888; Rat: Thr888

Storage/Stability: Store at -20°C/1 year

Form of Antibody: Rabbit IgG in phosphate buffered saline (without Mg^{2+} and Ca^{2+}), pH 7.4, 150mM NaCl, 0.02% sodium azide and 50% glycerol.

Immunogen: The antiserum was produced against synthesized phosphopeptide derived from human Calcium Sensing Receptor around the phosphorylation site of threonine 888 (R-A-T^P-L-R).

Purification: The antibody was affinity-purified from rabbit antiserum by affinity-chromatography using

epitope-specific phosphopeptide. The antibody against non-phosphopeptide was removed by chromatography using non-phosphopeptide corresponding to the phosphorylation site.

Specificity: Calcium Sensing Receptor (Phospho-Thr888) antibody detects endogenous levels of Calcium Sensing Receptor only when phosphorylated at threonine 888.

Reactivity: Human, Mouse, Rat

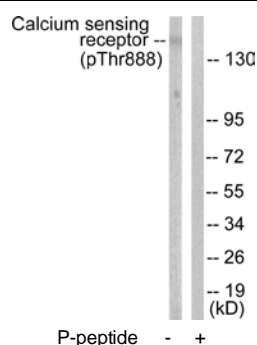
Applications: WB: 1:500~1:1000 IF: 1:100~1:500
ELISA: 1:40000

References:

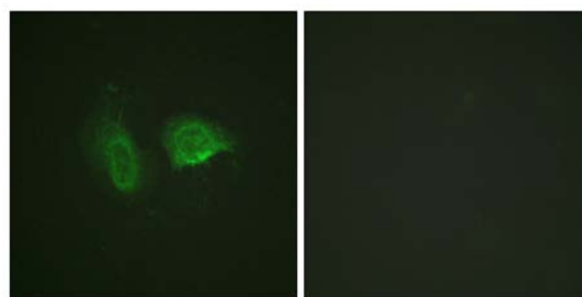
Garrett J.E., J. Biol. Chem. 270:12919-12925(1995).

Aida K., Biochem. Biophys. Res. Commun. 214:524-529(1995).

Uckun-Kitapci A., Am. J. Med. Genet. A 132:125-129(2005).



Western blot analysis of extracts from LOVO cells, using Calcium Sensing Receptor (Phospho-Thr888) antibody.



Immunofluorescence analysis of HeLa cells, using Calcium Sensing Receptor (Phospho-Thr888) antibody.

For Research Use Only