



## Caspase 9 (Phospho-Tyr153) Antibody

E11-0832A

**Catalog Number:** E11-0832A

**Concentration:** 1mg/ml

**Swiss-Prot No.:** P55211

**Other Names:** APAF-3, Apoptotic protease Mch-6, Apoptotic protease activating factor 3, CASP-9, Caspase-9, Caspase-9 precursor, Caspase9, EC 3.4.22.-, ICE-LAP6, ICE-like apoptotic protease 6, MCH6, RNCASP9

**All Sites:** Human: Tyr153; Mouse: Tyr191; Rat: Tyr191

**Storage/Stability:** Store at -20°C/1 year

**Form of Antibody:** Rabbit IgG in phosphate buffered saline (without  $Mg^{2+}$  and  $Ca^{2+}$ ), pH 7.4, 150mM NaCl, 0.02% sodium azide and 50% glycerol.

**Immunogen:** The antiserum was produced against synthesized phosphopeptide derived from human Caspase 9 around the phosphorylation site of tyrosine 153 (L-A-Y<sup>P</sup>-I-L).

**Purification:** The antibody was affinity-purified from rabbit antiserum by affinity-chromatography using epitope-specific phosphopeptide. The antibody against non-phosphopeptide was removed by chromatography using non-phosphopeptide corresponding to the phosphorylation site.

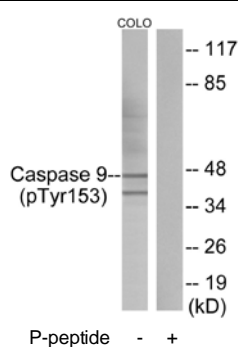
**Specificity:** Caspase 9 (Phospho-Tyr153) antibody detects endogenous levels of Caspase 9 only when phosphorylated at tyrosine 153.

**Reactivity:** Human, Mouse, Rat

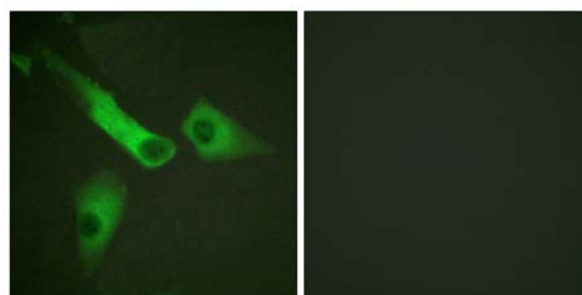
**Applications:** WB: 1:500~1:1000 IF: 1:100~1:500  
ELISA: 1:10000

**References:**

Duan H., J. Biol. Chem. 271:16720-16724(1996).  
Srinivasula S.M., J. Biol. Chem. 271:27099-27106(1996).  
Hadano S., Mamm. Genome 10:757-760(1999).



Western blot analysis of extracts from COLO205 cells, using Caspase 9 (Phospho-Tyr153) antibody.



Immunofluorescence analysis of HeLa cells, using Caspase 9 (Phospho-Tyr153) antibody.

**For Research Use Only**