



Caspase 9 (Phospho-Ser196) Antibody

E11-0834A

Catalog Number: E11-0834A

Concentration: 1mg/ml

Swiss-Prot No.: P55211

Other Names: APAF-3, Apoptotic protease Mch-6, Apoptotic protease activating factor 3, CASP-9, Caspase-9, Caspase-9 precursor, Caspase9, EC 3.4.22.-, ICE-LAP6, ICE-like apoptotic protease 6, MCH6, RNCASP9

All Sites: Human: Ser196

Storage/Stability: Store at -20 °C/1 year

Form of Antibody: Rabbit IgG in phosphate buffered saline (without Mg^{2+} and Ca^{2+}), pH 7.4, 150mM NaCl, 0.02% sodium azide and 50% glycerol.

Immunogen: The antiserum was produced against synthesized phosphopeptide derived from human Caspase 9 around the phosphorylation site of serine 196

(F-S-S^P-L-H).

Purification: The antibody was affinity-purified from rabbit antiserum by affinity-chromatography using epitope-specific phosphopeptide. The antibody against non-phosphopeptide was removed by chromatography using non-phosphopeptide corresponding to the phosphorylation site.

Specificity: Caspase 9 (Phospho-Ser196) antibody detects endogenous levels of Caspase 9 only when phosphorylated at serine 196.

Reactivity: Human

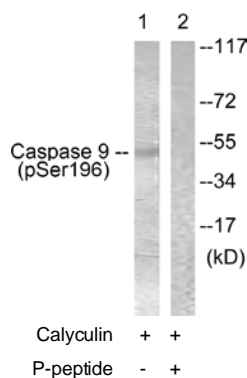
Applications: WB: 1:500~1:1000 ELISA: 1:20000

References:

Duan H., J. Biol. Chem. 271:16720-16724(1996).

Srinivasula S.M., J. Biol. Chem. 271:27099-27106(1996).

Shiozaki E.N., Mol. Cell 11:519-527(2003).



Western blot analysis of extracts from 293 cells, treated with Calyculin (50nM, 30mins), using Caspase 9 (Phospho-Ser196) antibody.

For Research Use Only