



Caspase 3 (Phospho-Ser150) Antibody

E11-0835A

Catalog Number: E11-0835A

Concentration: 1mg/ml

Swiss-Prot No.: P42574

Other Names: Apopain precursor, CASP-3, CPP-32, CPP32, Caspase-3, Cysteine protease CPP32, EC 3.4.22.-, ICE3, SCA-1, SREBP cleavage activity 1, Yama protein

All Sites: Human: Ser150; Mouse: Ser150; Rat: Ser150

Storage/Stability: Store at -20°C/1 year

Form of Antibody: Rabbit IgG in phosphate buffered saline (without Mg^{2+} and Ca^{2+}), pH 7.4, 150mM NaCl, 0.02% sodium azide and 50% glycerol.

Immunogen: The antiserum was produced against synthesized phosphopeptide derived from human Caspase 3 around the phosphorylation site of serine 150 (C-R-S^P-L-T).

Purification: The antibody was affinity-purified from

rabbit antiserum by affinity-chromatography using epitope-specific phosphopeptide. The antibody against non-phosphopeptide was removed by chromatography using non-phosphopeptide corresponding to the phosphorylation site.

Specificity: Caspase 3 (Phospho-Ser150) antibody detects endogenous levels of Caspase 3 only when phosphorylated at serine 150.

Reactivity: Human, Mouse, Rat

Applications: WB: 1:500~1:1000 IHC: 1:50~1:100
ELISA: 1:40000

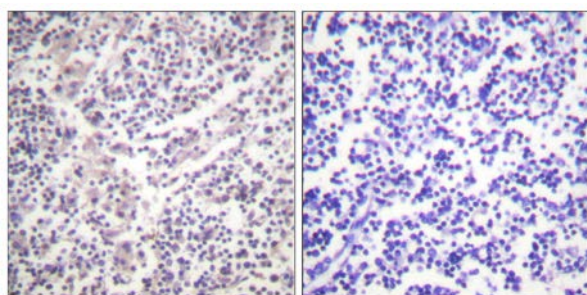
References:

Daniela Sciak, J. Immunol., Apr 2000; 164: 3806.

Randolph Hutter, Circulation, Apr 2004; 109: 2001 - 2008.

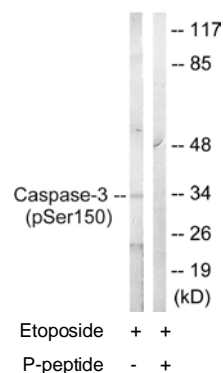
Andreas Hartmann, PNAS, Mar 2000; 97: 2875.

Keith F. Izban, Am. J. Pathol., May 1999; 154: 1439.



P-peptide - +

Immunohistochemistry analysis of paraffin-embedded human lymph node tissue using Caspase 3 (Phospho-Ser150) antibody.



Western blot analysis of extracts from Jurkat cells, treated with Etoposide (25µM, 60mins), using Caspase 3 (Phospho-Ser150) antibody.

For Research Use Only