



## CD171/N-CAML1(Phospho-Ser1181)Antibody

E11-0841A

**Catalog Number:** E11-0841A

**Concentration:** 1mg/ml

**Swiss-Prot No.:** P32004

**Other Names:** CAML, CAML1, CD171 antigen, L1CAM, MIC5, Neural cell adhesion molecule L1 precursor

**All Sites:** Human: Ser1181; Mouse: Ser1184; Rat: Ser1183

**Storage/Stability:** Store at -20 °C/1 year

**Form of Antibody:** Rabbit IgG in phosphate buffered saline (without  $Mg^{2+}$  and  $Ca^{2+}$ ), pH 7.4, 150mM NaCl, 0.02% sodium azide and 50% glycerol.

**Immunogen:** The antiserum was produced against synthesized phosphopeptide derived from human CD171/N-CAML1 around the phosphorylation site of serine 1181 (L-E-S<sup>P</sup>-D-N).

**Purification:** The antibody was affinity-purified from rabbit antiserum by affinity-chromatography using

epitope-specific phosphopeptide. The antibody against non-phosphopeptide was removed by chromatography using non-phosphopeptide corresponding to the phosphorylation site.

**Specificity:** CD171/N-CAML1 (Phospho-Ser1181) antibody detects endogenous levels of CD171/N-CAML1 only when phosphorylated at serine 1181.

**Reactivity:** Human, Mouse, Rat

**Applications:** WB: 1:500~1:1000 ELISA: 1:20000

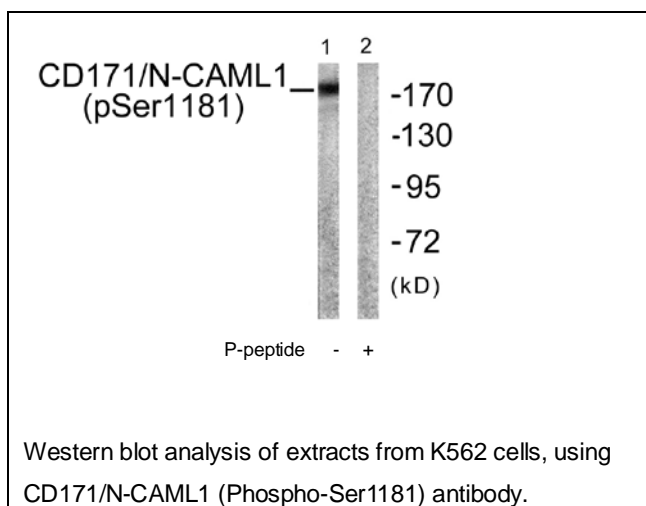
### References:

Yves Allory, Clin. Cancer Res., Feb 2005; 11: 1190 - 1197.

David Mason, Blood, May 2002; 99: 3877 - 3880.

Jussuf T. Kaifi, AACR Meeting Abstracts, Apr 2005; 2005: 289.

Paul Gutwein, Clin. Cancer Res., Apr 2005; 11: 2492 - 2501.



**For Research Use Only**