



## CD171/N-CAML1 (Ab-1181) Antibody

**E11-0841B****Catalog Number:** E11-0841B**Concentration:** 1mg/ml**Swiss-Prot No.:** P32004**Other Names:** CAML; CAML1; CD171 antigen; L1CAM; MIC5; Neural cell adhesion molecule L1**Storage/Stability:** Store at -20 °C/1 year**Form of Antibody:** Rabbit IgG in phosphate buffered saline (without  $Mg^{2+}$  and  $Ca^{2+}$ ), pH 7.4, 150mM NaCl, 0.02% sodium azide and 50% glycerol.**Immunogen:** The antiserum was produced against synthesized non-phosphopeptide derived from human CD171/N-CAML1 around the phosphorylation site of serine 1181 (L-E-S<sup>P</sup>-D-N).**Purification:** The antibody was affinity-purified from

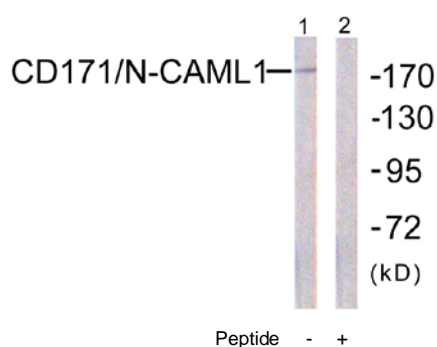
rabbit antiserum by affinity-chromatography using epitope-specific immunogen.

**Specificity:** CD171/N-CAML1 (Ab-1181) antibody detects endogenous levels of total CD171/N-CAML1 protein.**Reactivity:** Human, Mouse, Rat**Applications:** WB: 1:500~1:1000 IF: 1:100~1:500  
ELISA: 1:1000**References:**

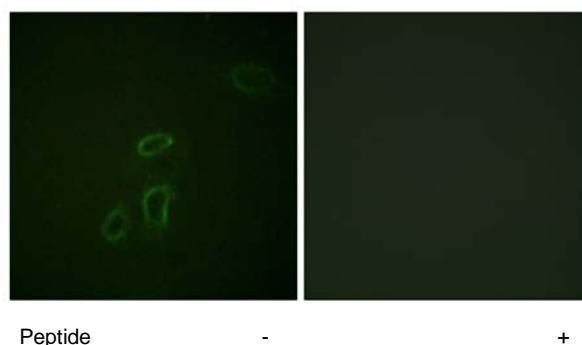
Kobayashi M., Biochim. Biophys. Acta 1090:238-240(1991).

Hlavin M.L., Genomics 11:416-423(1991).

Reid R.A., J. Mol. Neurosci. 3:127-135(1992).



Western blot analysis of extracts from K562 cells, using CD171/N-CAML1 (Ab-1181) antibody.



Immunofluorescence analysis of HepG2 cells, using CD171/N-CAML1 (Ab-1181) antibody.

**For Research Use Only**