



CD227/Mucin 1 (Phospho-Tyr1243) Antibody

E11-0844A

Catalog Number: E11-0844A

Concentration: 1mg/ml

Swiss-Prot No.: P15941

Other Names: Breast carcinoma-associated antigen DF3, CD227, Carcinoma-associated mucin, EMA, Episialin, H23AG, MUC-1, MUC1, Mucin 1 precursor, PEM, PEMT, PUM, Peanut-reactive urinary mucin, Polymorphic epithelial mucin, Tumor-associated epithelial membrane antigen, Tumor-associated mucin

All Sites: Human: Tyr1243; Mouse: Tyr618

Storage/Stability: Store at -20 °C/1 year

Form of Antibody: Rabbit IgG in phosphate buffered saline (without Mg^{2+} and Ca^{2+}), pH 7.4, 150mM NaCl, 0.02% sodium azide and 50% glycerol.

Immunogen: The antiserum was produced against synthesized phosphopeptide derived from human CD227/Mucin 1 around the phosphorylation site of

tyrosine 1243 (L-S-Y^P-T-N).

Purification: The antibody was affinity-purified from rabbit antiserum by affinity-chromatography using epitope-specific phosphopeptide. The antibody against non-phosphopeptide was removed by chromatography using non-phosphopeptide corresponding to the phosphorylation site.

Specificity: CD227/Mucin 1 (Phospho-Tyr1243) antibody detects endogenous levels of CD227/Mucin 1 only when phosphorylated at tyrosine 1243.

Reactivity: Human, Mouse

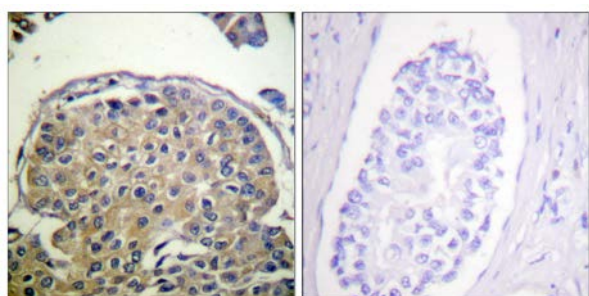
Applications: IHC: 1:50~1:100 ELISA: 1:20000

References:

Lan M.S., J. Biol. Chem. 265:15294-15299(1990).

Weiss M., Int. J. Cancer 66:55-59(1996).

Yu C.J., Oncology 53:118-126(1996).



P-peptide

-

+

Immunohistochemistry analysis of paraffin-embedded human breast carcinoma tissue using CD227/Mucin 1 (Phospho-Tyr1243) antibody.

For Research Use Only