



CD4 (Phospho-Ser433) Antibody

E11-0846A

Catalog Number: E11-0846A**Concentration:** 1mg/ml**Swiss-Prot No.:** P01730**Other Names:** CD4, T-cell surface antigen T4/Leu-3, T-cell surface glycoprotein CD4 precursor**All Sites:** Human: Ser433**Storage/Stability:** Store at -20 °C/1 year**Form of Antibody:** Rabbit IgG in phosphate buffered saline (without Mg^{2+} and Ca^{2+}), pH 7.4, 150mM NaCl, 0.02% sodium azide and 50% glycerol.**Immunogen:** The antiserum was produced against synthesized phosphopeptide derived from human CD4 around the phosphorylation site of serine 433 (R-M-S^P-Q-I).**Purification:** The antibody was affinity-purified from rabbit antiserum by affinity-chromatography using

epitope-specific phosphopeptide. The antibody against non-phosphopeptide was removed by chromatography using non-phosphopeptide corresponding to the phosphorylation site.

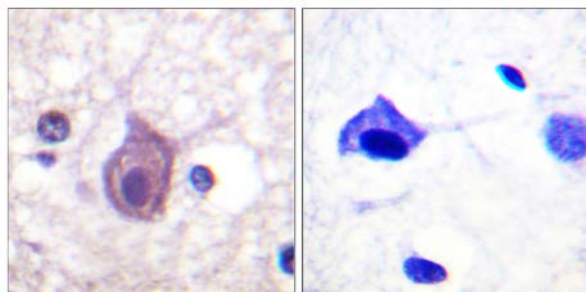
Specificity: CD4 (Phospho-Ser433) antibody detects endogenous levels of CD4 only when phosphorylated at serine 433.**Reactivity:** Human**Applications:** IHC: 1:50~1:100 IF: 1:100~1:500
ELISA: 1:40000**References:**

GR Harriman, J. Immunol., Oct 1990; 145: 2406.

G Zauli, Blood, Sep 1994; 84: 1896 - 1905.

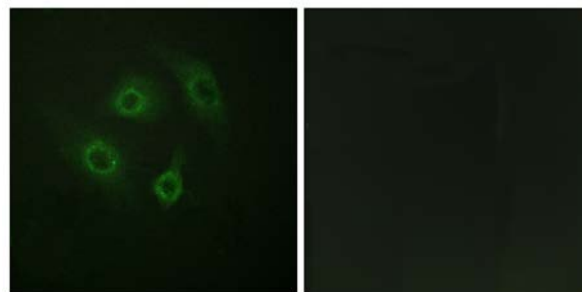
Andrew Zloza, Blood, Sep 2003; 102: 2156 - 2164.

David M. Rothstein, Int. Immunol., Jan 1993; 5: 409 - 418.



P-peptide - +

Immunohistochemistry analysis of paraffin-embedded human brain tissue using CD4 (Phospho-Ser433) antibody.



P-peptide - +

Immunofluorescence analysis of HepG2 cells, using CD4 (Phospho-Ser433) antibody.

For Research Use Only