



CD45 Antibody

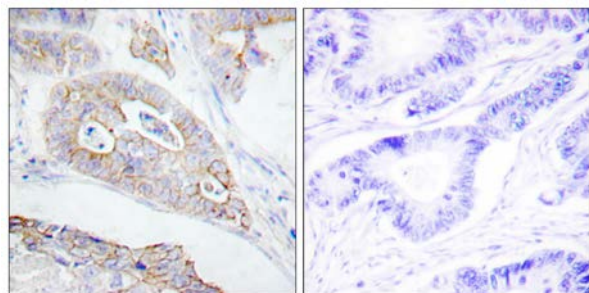
E11-0848B

Catalog Number: E11-0848B**Concentration:** 1mg/ml**Swiss-Prot No.:** P08575**Other Names:** EC 3.1.3.48, L-CA, LY-5, Leukocyte common antigen precursor, Leukocyte common antigen variant 4 precursor, Lymphocyte common antigen Ly-5, PTPRC, T200**Storage/Stability:** Store at -20°C/1 year**Form of Antibody:** Rabbit IgG in phosphate buffered saline (without Mg^{2+} and Ca^{2+}), pH 7.4, 150mM NaCl, 0.02% sodium azide and 50% glycerol.**Immunogen:** The antiserum was produced against synthesized peptide derived from Internal of human CD45.**Purification:** The antibody was affinity-purified from rabbit antiserum by affinity-chromatography using epitope-specific immunogen.**Specificity:** CD45 antibody detects endogenous levels of total CD45 protein.**Reactivity:** Human (Identities = 100%, Positives = 100%);
Mouse (Identities = 100%, Positives = 100%);
Rat (Identities = 88%, Positives = 88%)**Applications:** IHC: 1:50~1:100 IF: 1:100~1:500
ELISA: 1:1000**References:**

K M Tchou-Wong. Mol. Cell. Biol., Jan 1992; 12: 394 - 401.

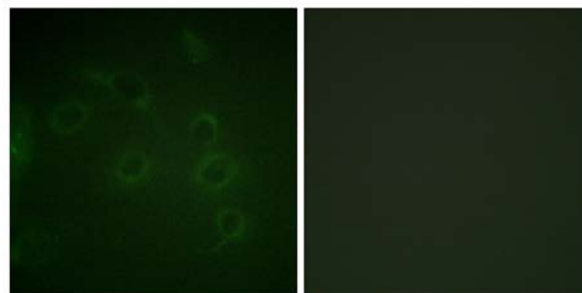
Daniel W. McKenney. J. Biol. Chem., Oct 1995; 270: 24949.

Simon X. Liang. Physiol Genomics, Oct 2005; 23: 172 - 181.



Peptide - +

Immunohistochemistry analysis of paraffin-embedded human colon carcinoma tissue using CD45 antibody.



Peptide - +

Immunofluorescence analysis of HuvEc cells, using CD45 antibody.

For Research Use Only