



## CD5 (Phospho-Tyr453) Antibody

E11-0849A

**Catalog Number:** E11-0849A

**Concentration:** 1mg/ml

**Swiss-Prot No.:** P06127

**Other Names:** LEU1, Lymphocyte antigen CD5, Lymphocyte glycoprotein Ly-1, Lymphocyte glycoprotein T1/Leu-1, Lyt-1, T-cell surface glycoprotein CD5 precursor

**All Sites:** Human: Tyr453; Mouse: Tyr452

**Storage/Stability:** Store at -20 °C/1 year

**Form of Antibody:** Rabbit IgG in phosphate buffered saline (without  $Mg^{2+}$  and  $Ca^{2+}$ ), pH 7.4, 150mM NaCl, 0.02% sodium azide and 50% glycerol.

**Immunogen:** The antiserum was produced against synthesized phosphopeptide derived from human CD5 around the phosphorylation site of tyrosine 453 (N-E-Y<sup>P</sup>-S-Q).

**Puri-fication:** The antibody was affinity-purified from

rabbit antiserum by affinity-chromatography using epitope-specific phosphopeptide. The antibody against non-phosphopeptide was removed by chromatography using non-phosphopeptide corresponding to the phosphorylation site.

**Specificity:** CD5 (Phospho-Tyr453) antibody detects endogenous levels of CD5 only when phosphorylated at tyrosine 453.

**Reactivity:** Human, Mouse

**Applications:** WB: 1:500~1:1000 IF: 1:100~1:500  
ELISA: 1:20000

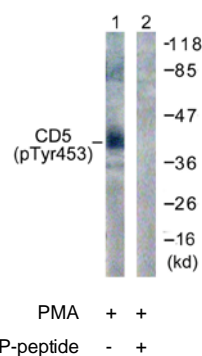
### References:

Masanori Taniguchi, Blood, Feb 1998; 91: 1145 - 1151.

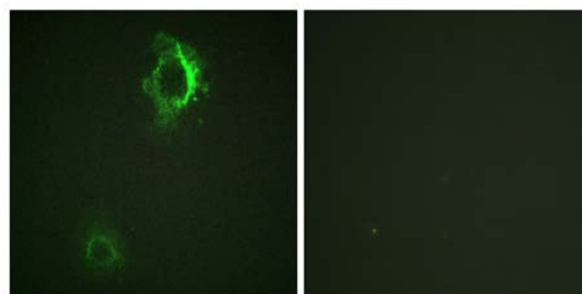
David Kaplan, PNAS, Nov 2001; 98: 13850.

SB Ebeling, J. Immunol., Dec 1993; 151: 6891.

Glenn H. Cantor, J. Virol., Feb 2001; 75: 1689 - 1696.



Western blot analysis of extracts from 293 cells, treated with PMA (125ng/ml, 30mins), using CD5 (Phospho-Tyr453) antibody.



P-peptide - +

Immunofluorescence analysis of HepG2 cells, using CD5 (Phospho-Tyr453) antibody.

**For Research Use Only**