



CD5 (Ab-453) Antibody

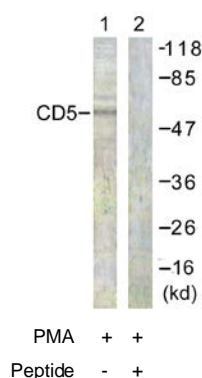
E11-0849B**Catalog Number:** E11-0849B**Concentration:** 1mg/ml**Swiss-Prot No.:** P06127**Other Names:** LEU1, Lymphocyte antigen CD5, Lymphocyte glycoprotein Ly-1, Lymphocyte glycoprotein T1/Leu-1, Lyt-1, T-cell surface glycoprotein CD5 precursor**Storage/Stability:** Store at -20°C/1 year**Form of Antibody:** Rabbit IgG in phosphate buffered saline (without Mg^{2+} and Ca^{2+}), pH 7.4, 150mM NaCl, 0.02% sodium azide and 50% glycerol.**Immunogen:** The antiserum was produced against synthesized non-phosphopeptide derived from human CD5 around the phosphorylation site of tyrosine 453 (N-E-Y^P-S-Q).**Purification:** The antibody was affinity-purified from rabbit antiserum by affinity-chromatography using epitope-specific immunogen.**Specificity:** CD5 (Ab-453) antibody detects endogenous levels of total CD5 protein.**Reactivity:** Human, Mouse**Applications:** WB: 1:500~1:1000 ELISA: 1:20000**References:**

Masanori Taniguchi, Blood, Feb 1998; 91: 1145 - 1151.

David Kaplan, PNAS, Nov 2001; 98: 13850.

SB Ebeling, J. Immunol., Dec 1993; 151: 6891.

Glenn H. Cantor, J. Virol., Feb 2001; 75: 1689 - 1696.



Western blot analysis of extracts from 293 cells, treated with PMA (125ng/ml, 30mins), using CD5 (Ab-453) antibody.

For Research Use Only