



CD88/C5aR (Phospho-Ser338) Antibody

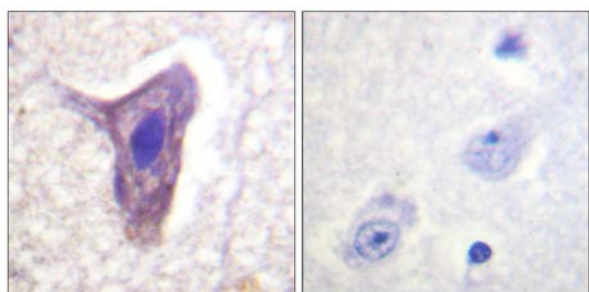
E11-0853A

Catalog Number: E11-0853A**Concentration:** 1mg/ml**Swiss-Prot No.:** P21730**Other Names:** C5AR, C5AR1, C5R1, C5a anaphylatoxin chemotactic receptor, C5a-R, CD88 antigen**All Sites:** Human: Ser338; Mouse: Ser335**Storage/Stability:** Store at -20 °C/1 year**Form of Antibody:** Rabbit IgG in phosphate buffered saline (without Mg^{2+} and Ca^{2+}), pH 7.4, 150mM NaCl, 0.02% sodium azide and 50% glycerol.**Immunogen:** The antiserum was produced against synthesized phosphopeptide derived from human CD88/C5aR around the phosphorylation site of serine 338 (T-R-S^P-T-V).**Purification:** The antibody was affinity-purified from

rabbit antiserum by affinity-chromatography using epitope-specific phosphopeptide. The antibody against non-phosphopeptide was removed by chromatography using non-phosphopeptide corresponding to the phosphorylation site.

Specificity: CD88/C5aR (Phospho-Ser338) antibody detects endogenous levels of CD88/C5aR only when phosphorylated at serine 338.**Reactivity:** Human, Mouse**Applications:** IHC: 1:50~1:100 ELISA: 1:40000**References:**

- Gerard N.P., Nature 349:614-617(1991).
Boulay F., Biochemistry 30:2993-2999(1991).
Gerard N.P., Biochemistry 32:1243-1250(1993).
Farzan M., J. Exp. Med. 193:1059-1066(2001).



P-peptide

-

+

Immunohistochemistry analysis of paraffin-embedded human brain tissue using CD88/C5aR (Phospho-Ser338) antibody.

For Research Use Only