



Centromeric Protein A (Phospho-Ser7) Antibody

rabbit antiserum by affinity-chromatography u

E11-0858A

Catalog Number: E11-0858A

Concentration: 1mg/ml

Swiss-Prot No.: P49450

Other Names: CENA, CENP-A, CENPA, Centromere autoantigen A, Centromere protein A

All Sites: Human: Ser7

Storage/Stability: Store at -20 °C/1 ye

Form of Antibody: Rabbit IgG in phosphate buffered saline (without Mg^{2+} and Ca^{2+}), pH 7.4, 150mM NaCl, 0.02% sodium azide and 50% glycerol.

Immunogen: The antiserum was produced against synthesized phosphopeptide derived from human Centromeric Protein A around the phosphorylation site of serine 7 (R-R-S^P-R-K).

Purification: The antibody was affinity-purified from

epitope-specific phosphopeptide. The antibody against non-phosphopeptide was removed by chromatography using non-phosphopeptide corresponding to the phosphorylation site.

Specificity: Centromeric Protein A (Phospho-Ser7) antibody detects endogenous levels of Centromeric Protein A only when phosphorylated at serine 7.

Reactivity: Human

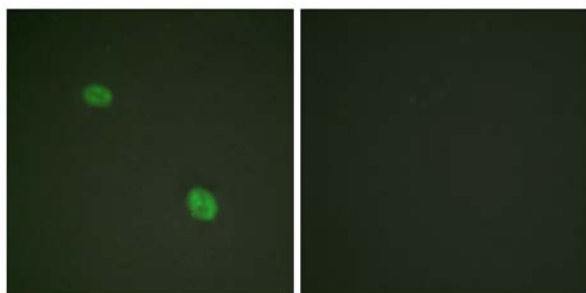
Applications: IF: 1:100~1:500 ELISA: 1:10000

References:

Black B.E., Nature 430:578-582(2004).

Olsen J.V., Cell 127:635-648(2006).

Foltz D.R., Nat. Cell Biol. 8:458-469(2006).



P-peptide

-

+

Immunofluorescence analysis of HeLa cells, using Centromeric Protein A (Phospho-Ser7) antibody.

For Research Use Only