



## Chk1 (Phospho-Ser286) Antibody

E11-0861A

**Catalog Number:** E11-0861A

**Concentration:** 1mg/ml

**Swiss-Prot No.:** O14757

**Other Names:** CHEK1, Chk1, EC 2.7.11.1, kinase Chk1

**All Sites:** Human: Ser286

**Storage/Stability:** Store at -20 °C/1 ye

**Form of Antibody:** Rabbit IgG in phosphate buffered saline (without  $Mg^{2+}$  and  $Ca^{2+}$ ), pH 7.4, 150mM NaCl, 0.02% sodium azide and 50% glycerol.

**Immunogen:** The antiserum was produced against synthesized phosphopeptide derived from human Chk1 around the phosphorylation site of serine 286 (S-E-S<sup>P</sup>-P-S).

**Purification:** The antibody was affinity-purified from

rabbit antiserum by affinity-chromatography using epitope-specific phosphopeptide. The antibody against non-phosphopeptide was removed by chromatography using non-phosphopeptide corresponding to the phosphorylation site.

**Specificity:** Chk1 (Phospho-Ser286) antibody detects endogenous levels of Chk1 only when phosphorylated at serine 286.

**Reactivity:** Human

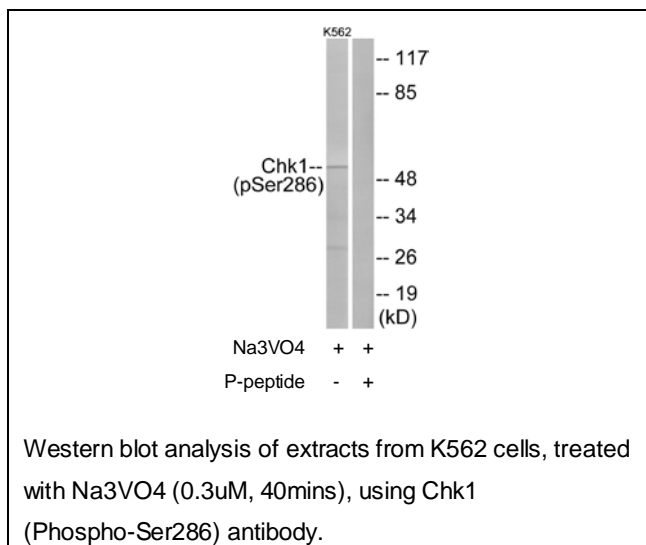
**Applications:** WB: 1:500~1:1000 IF: 1:100~1:500  
ELISA: 1:5000

**References:**

Sanchez Y., Science 277:1497-1501(1997).

Soerensen C.S., Cancer Cell 3:247-258(2003).

Matsuoka S., Science 316:1160-1166(2007).



**For Research Use Only**