



CHOP (Phospho-Ser30) Antibody

E11-0863A

Catalog Number: E11-0863A

Concentration: 1mg/ml

Swiss-Prot No.: P35638

Other Names: C/EBP-homologous protein, DDIT3, DNA-damage inducible transcript 3, GADD153, Growth arrest and DNA-damage-inducible protein GADD153

All Sites: Human: Ser30; Mouse: Ser30

Storage/Stability: Store at -20°C/1 year

Form of Antibody: Rabbit IgG in phosphate buffered saline (without Mg^{2+} and Ca^{2+}), pH 7.4, 150mM NaCl, 0.02% sodium azide and 50% glycerol.

Immunogen: The antiserum was produced against synthesized phosphopeptide derived from human CHOP around the phosphorylation site of serine 30 (V-L-S^P-S-D).

Purification: The antibody was affinity-purified from

rabbit antiserum by affinity-chromatography using epitope-specific phosphopeptide. The antibody against non-phosphopeptide was removed by chromatography using non-phosphopeptide corresponding to the phosphorylation site.

Specificity: CHOP (Phospho-Ser30) antibody detects endogenous levels of CHOP only when phosphorylated at serine 30.

Reactivity: Human, Mouse

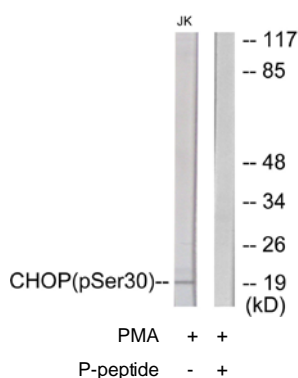
Applications: WB: 1:500~1:1000 IHC: 1:50~1:100
IF: 1:100~1:500 ELISA: 1:20000

References:

Park J.S., Gene 116:259-267(1992).

Crozat A., Nature 363:640-644(1993).

Sjoeblom T., Science 314:268-274(2006).



For Research Use Only