



## CSFR (Phospho-Tyr809) Antibody

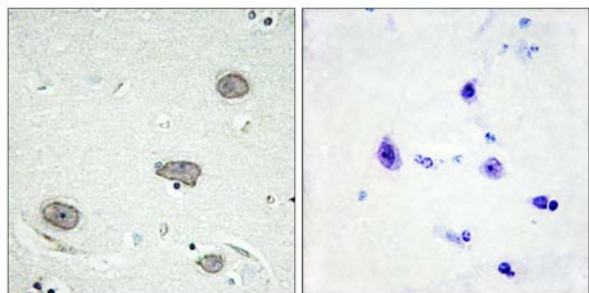
E11-0876A

**Catalog Number:** E11-0876A**Concentration:** 1mg/ml**Swiss-Prot No.:** P07333**Other Names:** CD115, CSF-1-R, CSF1R, CSFMR, EC 2.7.10.1, FMS, Fms proto-oncogene, M-CSFR, Macrophage colony stimulating factor I receptor precursor, c-fms, kinase CSFR**All Sites:** Human: Tyr809**Storage/Stability:** Store at -20 °C/1 year**Form of Antibody:** Rabbit IgG in phosphate buffered saline (without  $Mg^{2+}$  and  $Ca^{2+}$ ), pH 7.4, 150mM NaCl, 0.02% sodium azide and 50% glycerol.**Immunogen:** The antiserum was produced against synthesized phosphopeptide derived from human CSFR around the phosphorylation site of tyrosine 809 (S-N-Y<sup>P</sup>-I-V).**Purification:** The antibody was affinity-purified from rabbit antiserum by affinity-chromatography using epitope-specific phosphopeptide. The antibody against non-phosphopeptide was removed by chromatography using non-phosphopeptide corresponding to the phosphorylation site.**Specificity:** CSFR (Phospho-Tyr809) antibody detects endogenous levels of CSFR only when phosphorylated at tyrosine 809.**Reactivity:** Human (Identities = 100%, Positives = 100%)**Applications:** IHC: 1:50~1:100 ELISA: 1:20000**References:**

Arup Chakraborty. AACR Meeting Abstracts, Apr 2005; 2005: 953.

Melissa G. Hunter. Blood, Jan 1999; 93: 440 - 446.

J. Giron-Michel. J. Exp. Med., Mar 2003; 197: 763.



P-peptide

-

+

Immunohistochemistry analysis of paraffin-embedded human brain tissue using CSFR (Phospho-Tyr809) antibody.

**For Research Use Only**