



CSFR (Phospho-Tyr561) Antibody

E11-0877A

Catalog Number: E11-0877A

Concentration: 1mg/ml

Swiss-Prot No.: P07333

Other Names: CD115, CSF-1-R, CSF1R, CSFMR, EC 2.7.10.1, FMS, Fms proto-oncogene, M-CSFR, Macrophage colony stimulating factor I receptor precursor, c-fms, kinase CSFR

All Sites: Human: Tyr561; Mouse: Tyr559

Storage/Stability: Store at -20 °C/1 year

Form of Antibody: Rabbit IgG in phosphate buffered saline (without Mg^{2+} and Ca^{2+}), pH 7.4, 150mM NaCl, 0.02% sodium azide and 50% glycerol.

Immunogen: The antiserum was produced against synthesized phosphopeptide derived from human CSFR around the phosphorylation site of tyrosine 561 (N-S-Y^P-T-F).

Purification: The antibody was affinity-purified from rabbit antiserum by affinity-chromatography using epitope-specific phosphopeptide. The antibody against non-phosphopeptide was removed by chromatography using non-phosphopeptide corresponding to the phosphorylation site.

Specificity: CSFR (Phospho-Tyr561) antibody detects endogenous levels of CSFR only when phosphorylated at tyrosine 561.

Reactivity: Human, Mouse

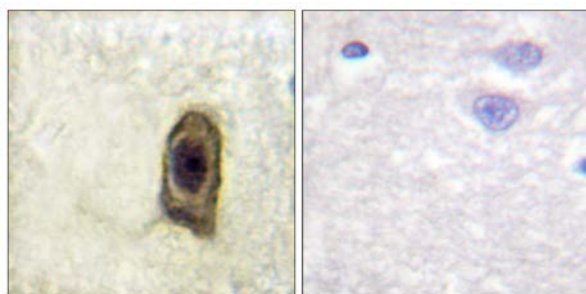
Applications: WB: 1:500~1:1000 IHC: 1:50~1:100
ELISA: 1:10000

References:

Hampe A., Oncogene Res. 4:9-17(1989).

Andre C., Genomics 39:216-226(1997).

Liu T., J. Proteome Res. 4:2070-2080(2005).

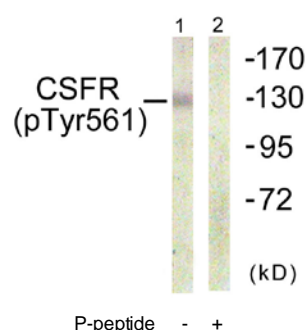


P-peptide

-

+

Immunohistochemistry analysis of paraffin-embedded human brain using CSFR (Phospho-Tyr561) antibody.



P-peptide

-

+

Western blot analysis of extracts from HepG2 cells, using CSFR (Phospho-Tyr561) antibody.

For Research Use Only