



Cyclin H (Phospho-Thr315) Antibody

E11-0881A

Catalog Number: E11-0881A**Concentration:** 1mg/ml**Swiss-Prot No.:** P51946**Other Names:** cyclin H; MO15-associated protein; p34; p37**All Sites:** Human: Thr315; Mouse: Thr315**Storage/Stability:** Store at -20 °C/1 year**Form of Antibody:** Rabbit IgG in phosphate buffered saline (without Mg^{2+} and Ca^{2+}), pH 7.4, 150mM NaCl, 0.02% sodium azide and 50% glycerol.**Immunogen:** The antiserum was produced against synthesized phosphopeptide derived from human Cyclin H around the phosphorylation site of threonine 315 (E-W-T^P-D-D).**Purification:** The antibody was affinity-purified from

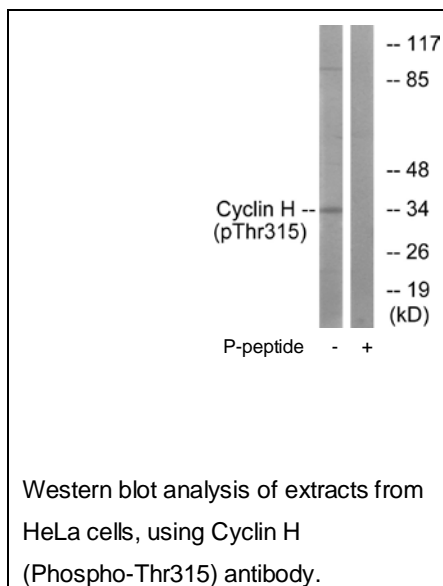
rabbit antiserum by affinity-chromatography using epitope-specific phosphopeptide. The antibody against non-phosphopeptide was removed by chromatography using non-phosphopeptide corresponding to the phosphorylation site.

Specificity: Cyclin H (Phospho-Thr315) antibody detects endogenous levels of Cyclin H only when phosphorylated at threonine 315.**Reactivity:** Human, Mouse**Applications:** WB: 1:500~1:1000 ELISA: 1:10000**References:**

Maekelae T.P., Nature 371:254-257(1994).

Fisher R.P., Cell 78:713-724(1994).

The MGC Project Team; Genome Res. 14:2121-2127(2004).

**For Research Use Only**