



4E-BP1 Antibody

E11-0884B

Catalog Number: E11-0884B

Concentration: 1mg/ml

Swiss-Prot No.: Q13541

Other Names: 4EBP1, EIF4EBP1, Eukaryotic translation initiation factor 4E binding protein 1, Insulin-stimulated EIF-4E binding protein PHAS-I, P/OKCL6, PHAS-1, PHAS-I

Storage/Stability: Store at -20°C/1 year

Form of Antibody: Rabbit IgG in phosphate buffered saline (without Mg^{2+} and Ca^{2+}), pH 7.4, 150mM NaCl, 0.02% sodium azide and 50% glycerol.

Immunogen: The antiserum was produced against synthesized peptide derived from Internal of human 4E-BP1.

Purification: The antibody was affinity-purified from

rabbit antiserum by affinity-chromatography using epitope-specific immunogen.

Specificity: 4E-BP1 antibody detects endogenous levels of total 4E-BP1 protein.

Reactivity: Human (Identities = 100%, Positives = 100%);
Mouse (Identities = 100%, Positives = 100%);
Rat (Identities = 100%, Positives = 100%)

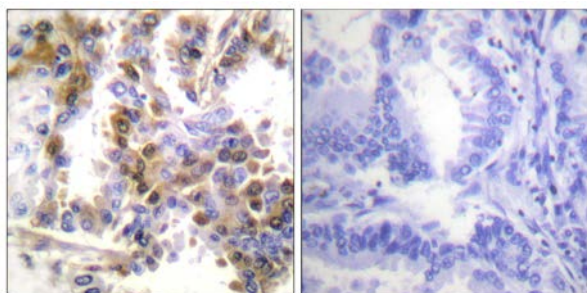
Applications: IHC: 1:50~1:100 IF: 1:100~1:500
ELISA: 1:1000

References:

M. Gorre, Blood (ASH Annual Meeting Abstracts), Nov 2005; 106: 2772.

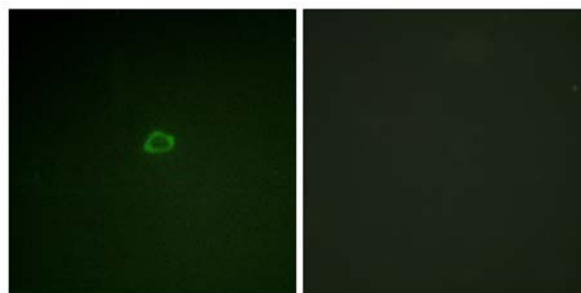
Robert J. J. Biol. Chem., Jul 2007; 282: 21176 - 21186.

Xiaoyan Zhou, Clin. Cancer Res., Oct 2004; 10: 6779 - 6788.



Peptide - +

Immunohistochemistry analysis of paraffin-embedded human lung carcinoma tissue using 4E-BP1 antibody.



Peptide - +

Immunofluorescence analysis of A549 cells, using 4E-BP1 antibody.

For Research Use Only