



53BP1 (Phospho-Ser25) Antibody

E11-0886A

Catalog Number: E11-0886A

Concentration: 1mg/ml

Swiss-Prot No.: Q12888

Other Names: P531, TP53B, TP53BP1, TRP53BP1, Tumor suppressor p53-binding protein 1, p53-binding protein 1

All Sites: Human: Ser25; Mouse: Ser25; Rat: Ser30

Storage/Stability: Store at -20°C/1 year

Form of Antibody: Rabbit IgG in phosphate buffered saline (without Mg^{2+} and Ca^{2+}), pH 7.4, 150mM NaCl, 0.02% sodium azide and 50% glycerol.

Immunogen: The antiserum was produced against synthesized phosphopeptide derived from human 53BP1 around the phosphorylation site of serine 25 (E-D-S^P-Q-P).

Purification: The antibody was affinity-purified from rabbit antiserum by affinity-chromatography using epitope-specific phosphopeptide. The antibody against

non-phosphopeptide was removed by chromatography using non-phosphopeptide corresponding to the phosphorylation site.

Specificity: 53BP1 (Phospho-Ser25) antibody detects endogenous levels of 53BP1 only when phosphorylated at serine 25.

Reactivity: Human (Identities = 100%, Positives = 100%);
Mouse (Identities = 100%, Positives = 100%);
Rat (Identities = 100%, Positives = 100%)

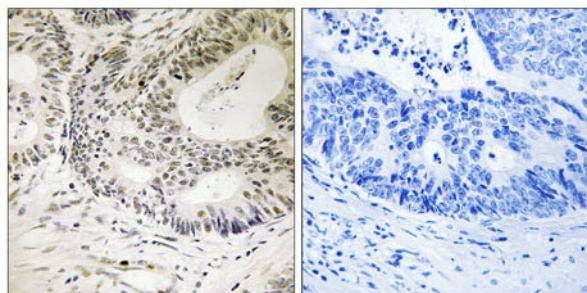
Applications: IHC: 1:50~1:100 IF: 1:100~1:500
ELISA: 1:1000

References:

Irene M. Ward. Mol. Cell. Biol., Nov 2005; 25: 10079 - 10086.

Fiona Pryde. J. Cell Sci., May 2005; 118: 2043 - 2055.

Julio C. Morales. J. Biol. Chem., Apr 2003; 278: 14971 - 14977. .

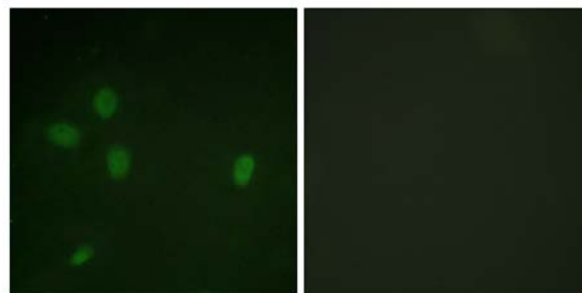


P-peptide

-

+

Immunohistochemistry analysis of paraffin-embedded human colon carcinoma tissue using 53BP1 (Phospho-Ser25) antibody.



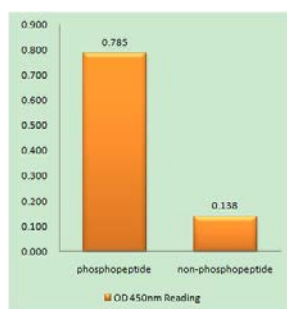
P-peptide

-

+

Immunofluorescence analysis of NIH/3T3 cells, using 53BP1 (Phospho-Ser25) antibody.

For Research Use Only



53BP1 (Phospho-Ser25) antibody reacts with epitope-specific phosphopeptide and corresponding non-phosphopeptide. The absorbance readings at 450 nM are shown in the ELISA figure.