



CRYAB/Crystallin- α -B (Phospho-Ser19) Antibody

E11-0895A

Catalog Number: E11-0895A**Concentration:** 1mg/ml**Swiss-Prot No.:** P02511**Other Names:** Alpha crystallin B chain,

Alpha(B)-crystallin, CRYA2, P23, Rosenthal fiber component, crystallin, alphaB

All Sites: Human: Ser19; Mouse: Ser19; Rat: Ser19**Storage/Stability:** Store at -20 °C/1 year**Form of Antibody:** Rabbit IgG in phosphate buffered saline (without Mg^{2+} and Ca^{2+}), pH 7.4, 150mM NaCl, 0.02% sodium azide and 50% glycerol.**Immunogen:** The antiserum was produced against synthesized phosphopeptide derived from human CRYAB/Crystallin- α -B around the phosphorylation site of serine 19 (F-H-S^P-P-S).**Purification:** The antibody was affinity-purified from rabbit antiserum by affinity-chromatography using

epitope-specific phosphopeptide. The antibody against non-phosphopeptide was removed by chromatography using non-phosphopeptide corresponding to the phosphorylation site.

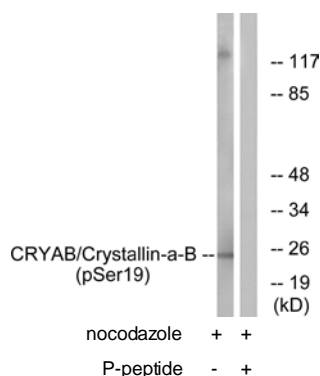
Specificity: CRYAB/Crystallin- α -B (Phospho-Ser19) antibody detects endogenous levels of CRYAB/Crystallin- α -B only when phosphorylated at serine 19.**Reactivity:** Human, Mouse, Rat**Applications:** WB: 1:500~1:1000 IHC: 1:50~1:100
ELISA: 1:10000**References:**

Dubin R.A., Genomics 7:594-601(1990).

Iwaki A., Neurosci. Lett. 140:89-92(1992).

Kovalyov L.I., Electrophoresis 16:1160-1169(1995).

Scanlan M.J., Int. J. Cancer 83:456-464(1999).



Western blot analysis of extracts from HepG2 cells, treated with nocodazole (1ug/ml, 16hours), using CRYAB/Crystallin- α -B (Phospho-Ser19) antibody.

For Research Use Only