



## CRYAB/Crystallin- $\alpha$ -B (Phospho-Ser59) Antibody

E11-0897A

**Catalog Number:** E11-0897A

**Concentration:** 1mg/ml

**Swiss-Prot No.:** P02511

**Other Names:** Alpha crystallin B chain,  
Alpha(B)-crystallin, CRYA2, P23, Rosenthal fiber  
component, crystallin, alphaB

**All Sites:** Human: Ser59; Mouse: Ser59; Rat: Ser59

**Storage/Stability:** Store at -20 °C/1 year

**Form of Antibody:** Rabbit IgG in phosphate buffered  
saline (without  $Mg^{2+}$  and  $Ca^{2+}$ ), pH 7.4, 150mM NaCl,  
0.02% sodium azide and 50% glycerol.

**Immunogen:** The antiserum was produced against  
synthesized phosphopeptide derived from human  
CRYAB/Crystallin- $\alpha$ -B around the phosphorylation site of  
serine 59 (A-P-S<sup>P</sup>-W-F).

**Purification:** The antibody was affinity-purified from

rabbit antiserum by affinity-chromatography using  
epitope-specific phosphopeptide. The antibody against  
non-phosphopeptide was removed by chromatography  
using non-phosphopeptide corresponding to the  
phosphorylation site.

**Specificity:** CRYAB/Crystallin- $\alpha$ -B (Phospho-Ser59)  
antibody detects endogenous levels of  
CRYAB/Crystallin- $\alpha$ -B only when phosphorylated at serine  
59.

**Reactivity:** Human, Mouse, Rat

**Applications:** IHC: 1:50~1:100 ELISA: 1:5000

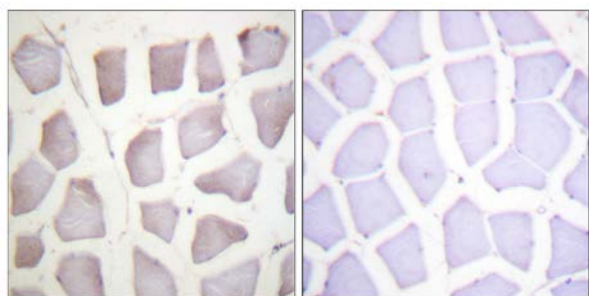
### References:

Dubin R.A., Genomics 7:594-601(1990).

Iwaki A., Neurosci. Lett. 140:89-92(1992).

Kovalyov L.I., Electrophoresis 16:1160-1169(1995).

Scanlan M.J., Int. J. Cancer 83:456-464(1999)



P-peptide

-

+

Immunohistochemistry analysis of paraffin-embedded  
human skeletal muscle tissue using CRYAB/Crystallin- $\alpha$ -B  
(Phospho-Ser59) antibody.

**For Research Use Only**