



## DNA-PK (Phospho-Ser2612) Antibody

E11-0907A

**Catalog Number:** E11-0907A

**Concentration:** 1mg/ml

**Swiss-Prot No.:** P78527

**Other Names:** DNA- PKcs; DNA-dependent protein kinase catalytic subunit; DNPK1; P460; PRKD; PRKDC; XRCC7; kinase DNA-PK

**All Sites:** Human: Ser2612

**Storage/Stability:** Store at -20°C/1 year

**Form of Antibody:** Rabbit IgG in phosphate buffered saline (without  $Mg^{2+}$  and  $Ca^{2+}$ ), pH 7.4, 150mM NaCl, 0.02% sodium azide and 50% glycerol.

**Immunogen:** The antiserum was produced against synthesized phosphopeptide derived from human DNA-PK around the phosphorylation site of serine 160 (Q-A-S<sup>P</sup>-Q-G).

**Purification:** The antibody was affinity-purified from

rabbit antiserum by affinity-chromatography using epitope-specific phosphopeptide. The antibody against non-phosphopeptide was removed by chromatography using non-phosphopeptide corresponding to the phosphorylation site.

**Specificity:** DNA-PK (Phospho-Ser2612) antibody detects endogenous levels of DNA-PK only when phosphorylated at serine 160.

**Reactivity:** Human

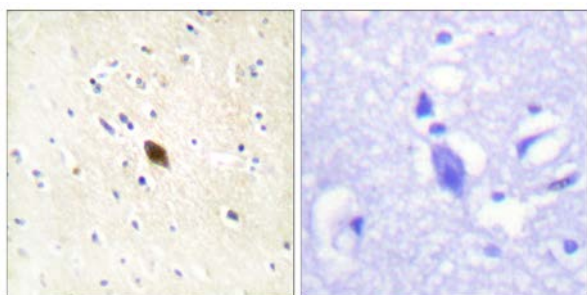
**Applications:** IHC: 1:50~1:100 ELISA: 1:1000

### References:

Hartley K.O., Cell 82:849-856(1995).

Gell D., Submitted (APR-2001) to the EMBL/GenBank/DBJ databases.

Anderson C.W., Radiat. Res. 156:2-9(2001).



P-peptide

-

+

Immunohistochemistry analysis of paraffin-embedded human brain tissue, using DNA-PK (Phospho-Ser2612) antibody.

**For Research Use Only**