



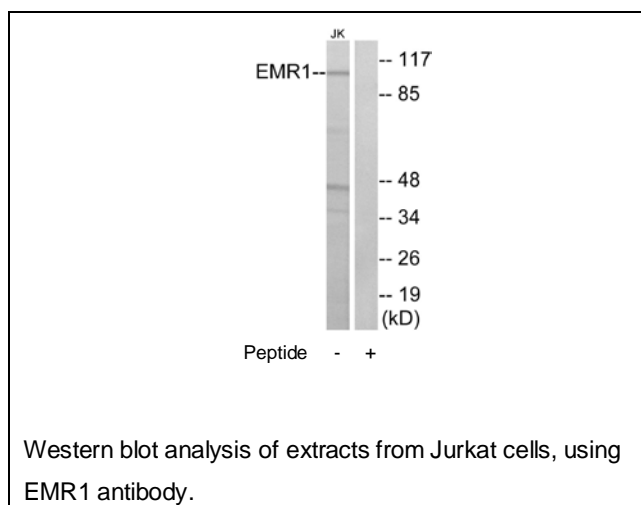
EMR1 Antibody

E11-090G**Catalog Number:** E11-090G**Concentration:** 1mg/ml, 100ug/100uL**Swiss-Prot No.:** Q14246**Other Names:** cell surface glycoprotein EMR1; EGF-like module containing mucin-like hormone receptor-like 1; EMR1 hormone receptor; TM7LN3**Storage/Stability:** Store at -20 °C/1 year**Form of Antibody:** Rabbit IgG in phosphate buffered saline (without Mg^{2+} and Ca^{2+}), pH 7.4, 150mM NaCl, 0.02% sodium azide and 50% glycerol.**Immunogen:** The antiserum was produced against synthesized peptide derived from C-terminal of human EMR1.**Purification:** The antibody was affinity-purified from rabbit antiserum by affinity-chromatography using epitope-specific immunogen.**Specificity:** EMR1 antibody detects endogenous levels of total EMR1 protein.**Reactivity:** Human**Applications:** WB: 1:500~1:1000 ELISA: 1:1000**References:**

Baud V., Genomics 26:334-344(1995).

Suwa M., Submitted (JUL-2001) to the EMBL/GenBank/DDBJ databases.

Grimwood J., Nature 428:529-535(2004).

**For Research Use Only**