



## EGFR (Phospho-Tyr1069) Antibody

E11-0912A

**Catalog Number:** E11-0912A

**Concentration:** 1mg/ml

**Swiss-Prot No.:** P00533

**Other Names:** EC 2.7.10.1, ERBB1, Epidermal growth factor receptor precursor, Receptor protein-tyrosine kinase ErbB-1, kinase EGFR

**All Sites:** Human: Tyr1069; Mouse: Tyr1069; Rat: Tyr1068

**Storage/Stability:** Store at -20 °C/1 year

**Form of Antibody:** Rabbit IgG in phosphate buffered saline (without  $Mg^{2+}$  and  $Ca^{2+}$ ), pH 7.4, 150mM NaCl, 0.02% sodium azide and 50% glycerol.

**Immunogen:** The antiserum was produced against synthesized phosphopeptide derived from human EGFR around the phosphorylation site of tyrosine 1069 (Q-R-Y<sup>P</sup>-S-S).

**Purification:** The antibody was affinity-purified from rabbit antiserum by affinity-chromatography using epitope-specific phosphopeptide. The antibody against non-phosphopeptide was removed by chromatography using non-phosphopeptide corresponding to the phosphorylation site.

**Specificity:** EGFR (Phospho-Tyr1069) antibody detects endogenous levels of EGFR only when phosphorylated at tyrosine 1069.

**Reactivity:** Human, Mouse, Rat

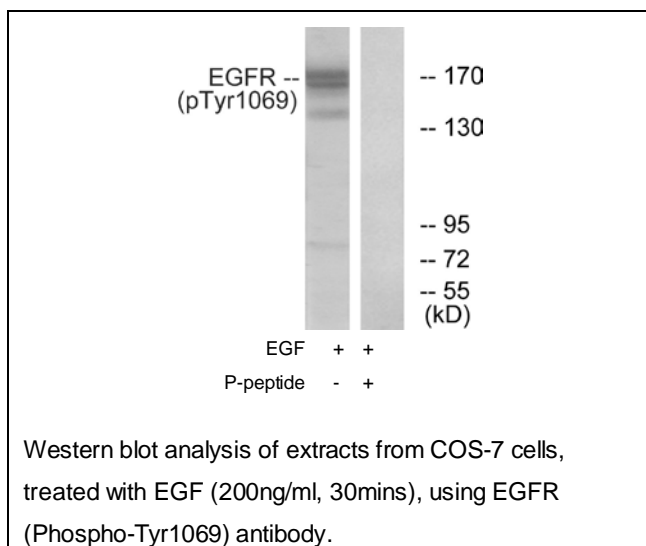
**Applications:** WB: 1:500~1:1000 ELISA: 1:20000

**References:**

S Leibl. J. Clin. Pathol., Jul 2005; 58: 700 - 704.

Dhara N. Amin. Cancer Res., Feb 2006; 66: 2173 - 2180.

B. Corkery. ASCO Meeting Abstracts, Jun 2007; 25: 14071.



**For Research Use Only**