



Epo-R (Phospho-Tyr368) Antibody

E11-0917A

Catalog Number: E11-0917A**Concentration:** 1mg/ml**Swiss-Prot No.:** P19235**Other Names:** EPO-R, EPOR, Erythropoietin receptor precursor**All Sites:** Human: Tyr368; Mouse: Tyr367; Rat: Tyr367**Storage/Stability:** Store at -20 °C/1 year**Form of Antibody:** Rabbit IgG in phosphate buffered saline (without Mg^{2+} and Ca^{2+}), pH 7.4, 150mM NaCl, 0.02% sodium azide and 50% glycerol.**Immunogen:** The antiserum was produced against synthesized phosphopeptide derived from human Epo-R around the phosphorylation site of tyrosine 368 (D-T-Y^P-L-V).**Purification:** The antibody was affinity-purified from

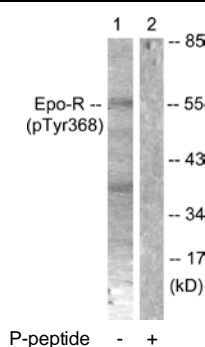
rabbit antiserum by affinity-chromatography using epitope-specific phosphopeptide. The antibody against non-phosphopeptide was removed by chromatography using non-phosphopeptide corresponding to the phosphorylation site.

Specificity: Epo-R (Phospho-Tyr368) antibody detects endogenous levels of Epo-R only when phosphorylated at tyrosine 368.**Reactivity:** Human, Mouse, Rat**Applications:** WB: 1:500~1:1000 IF: 1:100~1:500
ELISA: 1:1000**References:**

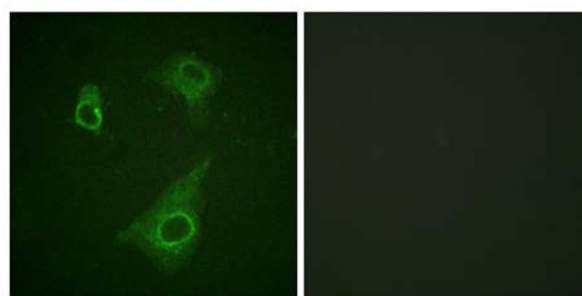
Winkelmann J.C., Blood 76:24-30(1990).

Jones S.S., Blood 76:31-35(1990).

Noguchi C.T., Blood 78:2548-2556(1991).



Western blot analysis of extracts from K562 cells, using Epo-R (Phospho-Tyr368) antibody.



Immunofluorescence analysis of HepG2 cells, using Epo-R (Phospho-Tyr368) antibody.

For Research Use Only