



## ErbB2 (Phospho-Thr686) Antibody

E11-0918A

**Catalog Number:** E11-0918A

**Concentration:** 1mg/ml

**Swiss-Prot No.:** P04626

**Other Names:** C-erbB-2, EC 2.7.10.1, Epidermal growth factor receptor-related protein, ErbB2, HER2, MLN 19, NEU, NEU proto-oncogene, NGL, Receptor protein-tyrosine kinase erbB-2, Receptor protein-tyrosine kinase erbB-2 precursor, Tyrosine kinase-type cell surface receptor HER2, kinase ErbB2, p185erbB2

**All Sites:** Human: Thr686; Mouse: Thr736; Rat: Thr688

**Storage/Stability:** Store at -20°C/1 year

**Form of Antibody:** Rabbit IgG in phosphate buffered saline (without  $Mg^{2+}$  and  $Ca^{2+}$ ), pH 7.4, 150mM NaCl, 0.02% sodium azide and 50% glycerol.

**Immunogen:** The antiserum was produced against synthesized phosphopeptide derived from human ErbB2 around the phosphorylation site of threonine 686

(K-Y-T<sup>P</sup>-M-R).

**Purification:** The antibody was affinity-purified from rabbit antiserum by affinity-chromatography using epitope-specific phosphopeptide. The antibody against non-phosphopeptide was removed by chromatography using non-phosphopeptide corresponding to the phosphorylation site.

**Specificity:** ErbB2 (Phospho-Thr686) antibody detects endogenous levels of ErbB2 only when phosphorylated at threonine 686.

**Reactivity:** Human, Mouse, Rat

**Applications:** IF: 1:100~1:500 ELISA: 1:5000

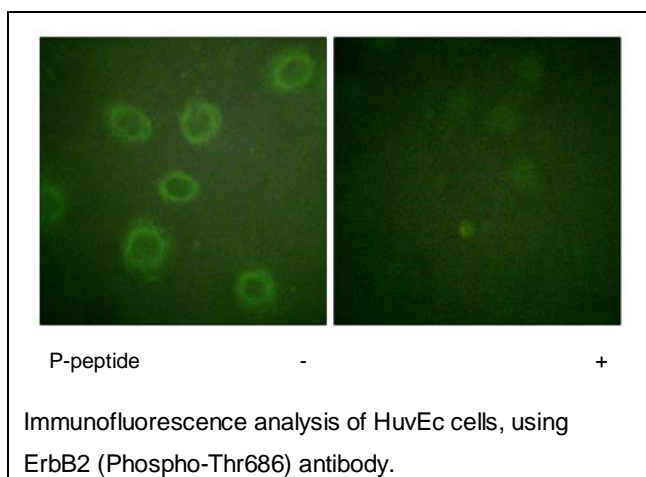
### References:

Yamamoto T., Nature 319:230-234(1986).

King C.R., Science 229:974-976(1985).

Arcaro A., Mol. Cell. Biol. 20:3817-3830(2000).

Olsen J.V., Cell 127:635-648(2006).



**For Research Use Only**