



FAS (Phospho-Tyr291) Antibody

E11-0927A

Catalog Number: E11-0927A

Concentration: 1mg/ml

Swiss-Prot No.: P25445

Other Names: Apo-1, CD95, FasL receptor, TNFRSF6, TNFR6, apoptosis-mediating surface antigen FAS, tumor necrosis factor receptor superfamily member 6

All Sites: Human: Tyr291

Storage/Stability: Store at -20°C/1 year

Form of Antibody: Rabbit IgG in phosphate buffered saline (without Mg^{2+} and Ca^{2+}), pH 7.4, 150mM NaCl, 0.02% sodium azide and 50% glycerol.

Immunogen: The antiserum was produced against synthesized phosphopeptide derived from human FAS around the phosphorylation site of tyrosine 291 (E-A-Y^P-D-T).

Purification: The antibody was affinity-purified from

rabbit antiserum by affinity-chromatography using epitope-specific phosphopeptide. The antibody against non-phosphopeptide was removed by chromatography using non-phosphopeptide corresponding to the phosphorylation site.

Specificity: FAS (Phospho-Tyr291) antibody detects endogenous levels of FAS only when phosphorylated at tyrosine 291.

Reactivity: Human (Identities = 100%, Positives = 100%)

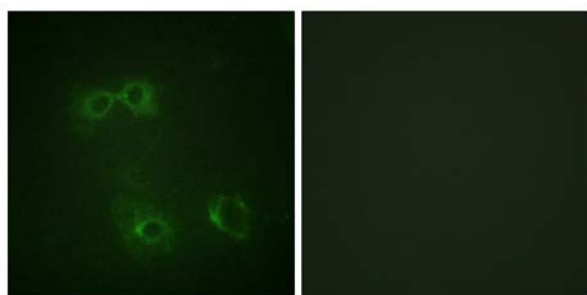
Applications: IF: 1:100~1:500 ELISA: 1:1000

References:

Fred Ramsdell. Int. Immunol., Oct 1994; 6: 1545 - 1553.

Rasheed Ahmad. J. Leukoc. Biol., Jan 2001; 69: 123.

Gabriella Brunlid. Stem Cells, Jul 2007; 10.1634/stemcells.2006-0745.

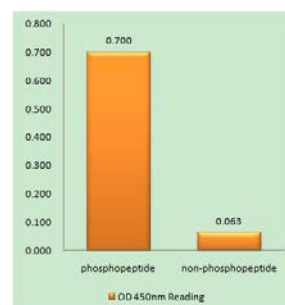


P-peptide

-

+

Immunofluorescence analysis of COS7 cells, using FAS (Phospho-Tyr291) antibody.



FAS (Phospho-Tyr291) antibody reacts with epitope-specific phosphopeptide and corresponding non-phosphopeptide. The absorbance readings at 450 nM are shown in the ELISA figure.

For Research Use Only