



GRK1 (Phospho-Ser21) Antibody

E11-0937A

Catalog Number: E11-0937A

Concentration: 1mg/ml

Swiss-Prot No.: Q15835

Other Names: EC 2.7.11.14, RHOK, RK, Rhodopsin kinase, kinase GRK1

All Sites: Human: Ser21; Mouse: Ser21; Rat: Ser21

Storage/Stability: Store at -20 °C/1 year

Form of Antibody: Rabbit IgG in phosphate buffered saline (without Mg^{2+} and Ca^{2+}), pH 7.4, 150mM NaCl, 0.02% sodium azide and 50% glycerol.

Immunogen: The antiserum was produced against synthesized phosphopeptide derived from human GRK1 around the phosphorylation site of serine 21 (R-G-S^P-F-D).

Purification: The antibody was affinity-purified from

rabbit antiserum by affinity-chromatography using epitope-specific phosphopeptide. The antibody against non-phosphopeptide was removed by chromatography using non-phosphopeptide corresponding to the phosphorylation site.

Specificity: GRK1 (Phospho-Ser21) antibody detects endogenous levels of GRK1 only when phosphorylated at serine 21.

Reactivity: Human, Mouse, Rat

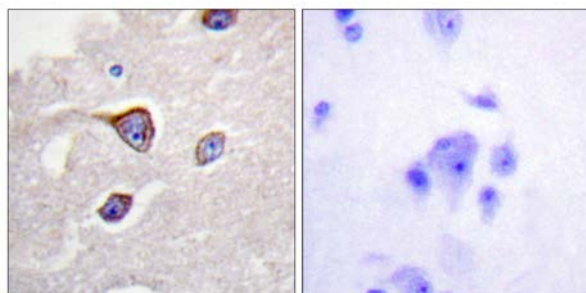
Applications: WB: 1:500~1:1000 IHC: 1:50~1:100
ELISA: 1:5000

References:

Zhao X., Vis. Neurosci. 14:225-232(1997).

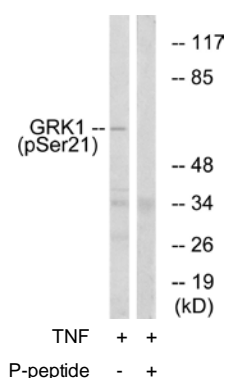
Khani S.C., Genomics 35:571-576(1996).

Ota T., Nat. Genet. 36:40-45(2004).



P-peptide - +

Immunohistochemistry analysis of paraffin-embedded human brain tissue using GRK1 (Phospho-Ser21) antibody.



Western blot analysis of extracts from COS7 cells, treated with TNF (20ng/ml, 5mins), using GRK1 (Phospho-Ser21) antibody.

For Research Use Only