



## HER3/ErbB3 (Phospho-Tyr1222) Antibody

E11-0944A

**Catalog Number:** E11-0944A

**Concentration:** 1mg/ml

**Swiss-Prot No.:** P21860

**Other Names:** EC 2.7.10.1, ERB3, ERBB3, HER3, Receptor protein-tyrosine kinase erbB-3 precursor, Tyrosine kinase-type cell surface receptor HER3, c-erbB3, kinase ErbB3

**All Sites:** Human: Tyr1222; Mouse: Tyr1219; Rat: Tyr1219

**Storage/Stability:** Store at -20°C/1 year

**Form of Antibody:** Rabbit IgG in phosphate buffered saline (without  $Mg^{2+}$  and  $Ca^{2+}$ ), pH 7.4, 150mM NaCl, 0.02% sodium azide and 50% glycerol.

**Immunogen:** The antiserum was produced against synthesized phosphopeptide derived from human HER3/ErbB3 around the phosphorylation site of tyrosine 1222 (L-G-Y<sup>P</sup>-E-Y).

**Purification:** The antibody was affinity-purified from

rabbit antiserum by affinity-chromatography using epitope-specific phosphopeptide. The antibody against non-phosphopeptide was removed by chromatography using non-phosphopeptide corresponding to the phosphorylation site.

**Specificity:** HER3/ErbB3 (Phospho-Tyr1222) antibody detects endogenous levels of HER3/ErbB3 only when phosphorylated at tyrosine 1222.

**Reactivity:** Human, Mouse, Rat

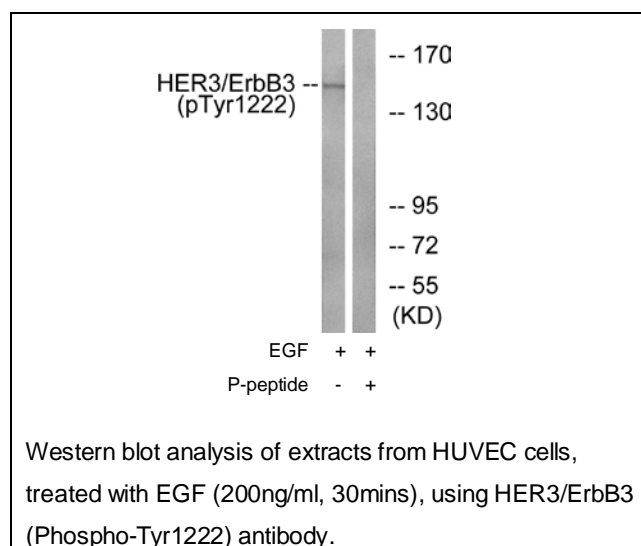
**Applications:** WB: 1:500~1:1000 IHC: 1:50~1:100  
IF: 1:100~1:500 ELISA: 1:20000

### References:

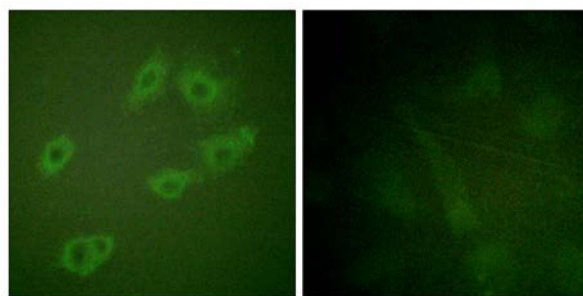
Katoh M., Biochem. Biophys. Res. Commun. 192:1189-1197(1993).

Kinugasa Y., Biochem. Biophys. Res. Commun. 321:1045-1049(2004).

Narkis G., Am. J. Hum. Genet. 81:589-595(2007).



**For Research Use Only**



P-peptide

-

+

Immunofluorescence analysis of **HuvEc** cells, using  
HER3/ErbB3 (Phospho-Tyr1222) antibody.