



HER3/ErbB3 (Ab-1222) Antibody

E11-0944B

Catalog Number: E11-0944B

Concentration: 1mg/ml

Swiss-Prot No.: P21860

Other Names: EC 2.7.10.1, ERB3, ERBB3, HER3, Receptor protein-tyrosine kinase erbB-3 precursor, Tyrosine kinase-type cell surface receptor HER3, c-erbB3, kinase ErbB3

Storage/Stability: Store at -20°C/1 year

Form of Antibody: Rabbit IgG in phosphate buffered saline (without Mg²⁺ and Ca²⁺), pH 7.4, 150mM NaCl, 0.02% sodium azide and 50% glycerol.

Immunogen: The antiserum was produced against synthesized non-phosphopeptide derived from human HER3/ErbB3 around the phosphorylation site of tyrosine 1222 (L-G-Y^P-E-Y).

Purification: The antibody was affinity-purified from rabbit antiserum by affinity-chromatography using epitope-specific immunogen.

Specificity: HER3/ErbB3 (Ab-1222) antibody detects endogenous levels of total HER3/ErbB3 protein.

Reactivity: Human

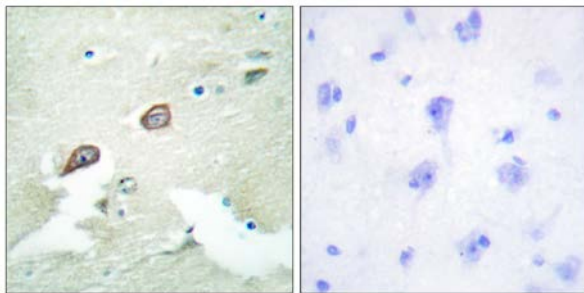
Applications: WB: 1:500~1:1000 IHC: 1:50~1:100 IF: 1:100~1:500 ELISA: 1:10000

References:

Katoh M., Biochem. Biophys. Res. Commun. 192:1189-1197(1993).

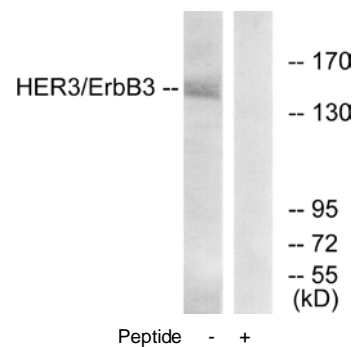
Kinugasa Y., Biochem. Biophys. Res. Commun. 321:1045-1049(2004).

Narkis G., Am. J. Hum. Genet. 81:589-595(2007).



Peptide - +

Immunohistochemistry analysis of paraffin-embedded human brain tissue using HER3/ErbB3 (Ab-1222) antibody.



Western blot analysis of extracts from 293 cells, using HER3/ErbB3 (Ab-1222) antibody.

For Research Use Only