



Smad2 (Phospho-Ser250) Antibody

E11-0998A

Catalog Number: E11-0998A

Concentration: 1mg/ml

Swiss-Prot No.: Q15796

Other Names: JV18-1; Mad-related protein 2; MADH2; MADR2; Mothers against decapentaplegic homolog 2; Mothers against DPP homolog 2; Smad 2

All Sites: Human: Ser250; Mouse: Ser250; Rat: Ser250

Storage/Stability: Store at -20°C/1 year

Form of Antibody: Rabbit IgG in phosphate buffered saline (without Mg²⁺ and Ca²⁺), pH 7.4, 150mM NaCl, 0.02% sodium azide and 50% glycerol.

Immunogen: The antiserum was produced against synthesized phosphopeptide derived from human Smad2 around the phosphorylation site of serine 250 (E-L-S^P-P-T).

Purification: The antibody was affinity-purified from

rabbit antiserum by affinity-chromatography using

epitope-specific phosphopeptide. The antibody against non-phosphopeptide was removed by chromatography using non-phosphopeptide corresponding to the phosphorylation site.

Specificity: Smad2 (Phospho-Ser250) antibody detects endogenous levels of Smad2 only when phosphorylated at serine 250.

Reactivity: Human (Identities = 100%, Positives = 100%); Mouse (Identities = 100%, Positives = 100%); Rat (Identities = 100%, Positives = 100%)

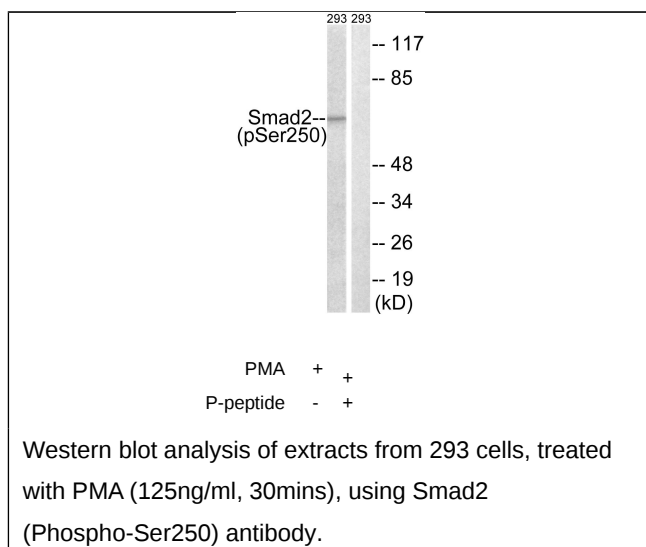
Applications: WB: 1:500~1:1000 ELISA: 1:10000

References:

[Riggins G.J.](#), Nat. Genet. 13-347-349(1996).

[Zhang Y.](#), Nature 383-168-172(1996).

[Eppert K.](#), Cell 86:543-552(1996).



For Research Use Only