



## Smad2 (Phospho-Thr220) Antibody

E11-1000A

**Catalog Number:** E11-1000A

**Concentration:** 1mg/ml

**Swiss-Prot No.:** Q15796

**Other Names:** JV18-1, MADH2, MADR2, Mad-related protein 2, Mothers against DPP homolog 2, Mothers against

**All Sites:** Human: Thr220; Mouse: Thr220; Rat: Thr220

**Storage/Stability:** Store at -20°C/1 year

**Form of Antibody:** Rabbit IgG in phosphate buffered saline (without  $Mg^{2+}$  and  $Ca^{2+}$ ), pH 7.4, 150mM NaCl, 0.02% sodium azide and 50% glycerol.

**Immunogen:** The antiserum was produced against synthesized phosphopeptide derived from human Smad2 around the phosphorylation site of threonine 220 (P-E-T<sup>P</sup>-P-P).

**Purification:** The antibody was affinity-purified from rabbit antiserum by affinity-chromatography using epitope-specific phosphopeptide. The antibody against non-phosphopeptide was removed by chromatography using non-phosphopeptide corresponding to the phosphorylation site.

**Specificity:** Smad2 (Phospho-Thr220) antibody detects endogenous levels of Smad2 only when phosphorylated at threonine 220.

**Reactivity:** Human, Mouse, Rat

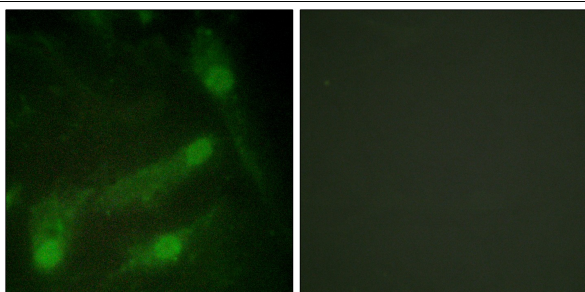
**Applications:** IF: 1:100~1:500 ELISA: 1:1000

**References:**

Riggins G.J., Nat. Genet. 13:347-349(1996).

Zhang Y., Nature 383:168-172(1996).

Eppert K., Cell 86:543-552(1996).



P-peptide      -                      +

Immunofluorescence analysis of HeLa cells, using Smad2 (Phospho-Thr220) antibody.

**For Research Use Only**