



Smad2/3 (Phospho-Thr8) Antibody

E11-1001A

Catalog Number: E11-1001A

Concentration: 1mg/ml

Swiss-Prot No.: P84022/Q15796

Other Names: JV15-2, MAD-3, MADH3, Mad3, Mothers against DPP homolog 3, Mothers against decapentaplegic homolog 3, SMAD 3, Smad 3; JV18-1, MADH2, MADR2, Mad-related protein 2, Mothers against DPP homolog 2, Mothers against decapentaplegic homolog 2, Smad 2

All Sites: Human: Thr8; Mouse: Thr8; Rat: Thr8

Storage/Stability: Store at -20°C/1 year

Form of Antibody: Rabbit IgG in phosphate buffered saline (without Mg²⁺ and Ca²⁺), pH 7.4, 150mM NaCl, 0.02% sodium azide and 50% glycerol.

Immunogen: The antiserum was produced against synthesized phosphopeptide derived from human Smad2/3 around the phosphorylation site of threonine 8

(P-F-T^P-P-P).

Purification: The antibody was affinity-purified from rabbit antiserum by affinity-chromatography using epitope-specific phosphopeptide. The antibody against non-phosphopeptide was removed by chromatography using non-phosphopeptide corresponding to the phosphorylation site.

Specificity: Smad2/3 (Phospho-Thr8) antibody detects endogenous levels of Smad2/3 only when phosphorylated at threonine 8.

Reactivity: Human, Mouse, Rat

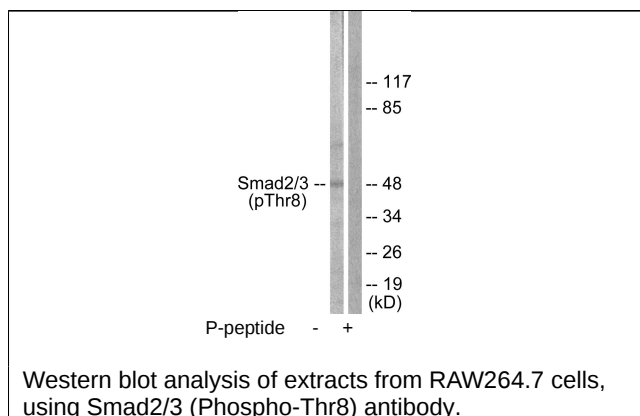
Applications: WB: 1:500~1:1000 ELISA: 1:10000

References:

Zhang Y., Nature 383:168-172(1996).

Riggins G.J., Nat. Genet. 13:347-349(1996).

Arai T., Cancer Lett. 122:157-163(1998).



For Research Use Only