



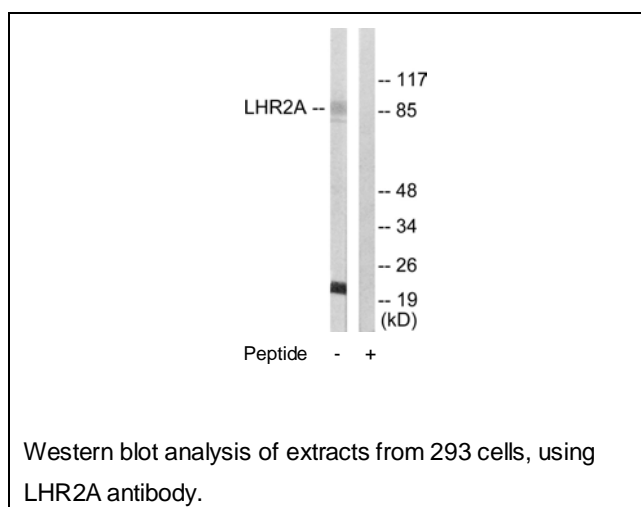
LHR2A Antibody

E11-10028C**Catalog Number:** E11-10028C**Concentration:** 1mg/ml**Swiss-Prot No.:** O00534**Other Names:** Loss of heterozygosity 11 chromosomal region 2 gene A protein, Breast cancer suppressor candidate 1, BCSC-1, LOH11CR2A, BCSC1**Storage/Stability:** Store at -20°C/1 year**Form of Antibody:** Rabbit IgG in phosphate buffered saline (without Mg^{2+} and Ca^{2+}), pH 7.4, 150mM NaCl, 0.02% sodium azide and 50% glycerol.**Immunogen:** The antiserum was produced against synthesized peptide derived from Internal of human LHR2A.**Purification:** The antibody was affinity-purified from rabbit antiserum by affinity-chromatography using epitope-specific immunogen.**Specificity:** LHR2A antibody detects endogenous levels of total LHR2A protein.**Reactivity:** Human**Applications:** WB: 1:500~1:1000 ELISA: 1:20000**References:**

Martin E.S., Proc. Natl. Acad. Sci. U.S.A. 100:11517-11522(2003).

The MGC Project Team, Genome Res. 14:2121-2127(2004).

Monaco C., Genomics 46:217-222(1997).

**For Research Use Only**