



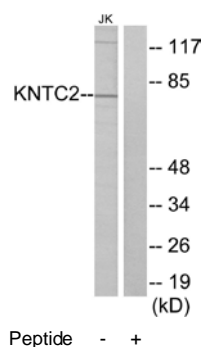
KNTC2 Antibody

E11-10051C**Catalog Number:** E11-10051C**Concentration:** 1mg/ml**Swiss-Prot No.:** O14777**Other Names:** HEC1, HEC, Highly expressed in cancer, rich in leucine heptad repeats, KNTC2, NDC80, Retinoblastoma-associated protein HEC, TID3, kinetochore associated 2**Storage/Stability:** Store at -20°C/1 year**Form of Antibody:** Rabbit IgG in phosphate buffered saline (without Mg^{2+} and Ca^{2+}), pH 7.4, 150mM NaCl, 0.02% sodium azide and 50% glycerol.**Immunogen:** The antiserum was produced against synthesized peptide derived from internal of human KNTC2.**Purification:** The antibody was affinity-purified from rabbit antiserum by affinity-chromatography using epitope-specific immunogen.**Specificity:** KNTC2 antibody detects endogenous levels of total KNTC2 protein.**Reactivity:** Human, Mouse**Applications:** WB: 1:500~1:1000 IF: 1:100~1:500
ELISA: 1:20000**References:**

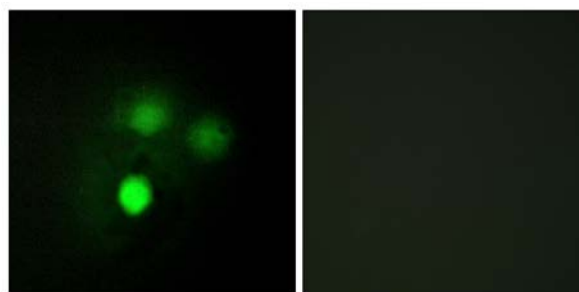
Chen Y., Mol. Cell. Biol. 17:6049-6056(1997).

The MGC Project Team, Genome Res. 14:2121-2127(2004).

Zheng L., Mol. Cell. Biol. 19:5417-5428(1999).



Western blot analysis of extracts from Jurkat cells, using KNTC2 antibody.



Immunofluorescence analysis of HUVEC cells, using KNTC2 antibody.

For Research Use Only