



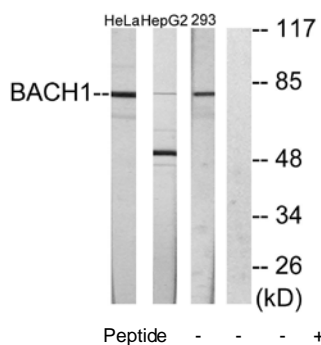
BACH1 Antibody

E11-10055C**Catalog Number:** E11-10055C**Concentration:** 1mg/ml**Swiss-Prot No.:** O14867**Other Names:** BAC1, BTB and CNC homolog 1, HA2303, Transcription regulator protein BACH1**Storage/Stability:** Store at -20°C/1 year**Form of Antibody:** Rabbit IgG in phosphate buffered saline (without Mg²⁺ and Ca²⁺), pH 7.4, 150mM NaCl, 0.02% sodium azide and 50% glycerol.**Immunogen:** The antiserum was produced against synthesized peptide derived from internal of human BACH1.**Purification:** The antibody was affinity-purified from rabbit antiserum by affinity-chromatography using epitope-specific immunogen.**Specificity:** BACH1 antibody detects endogenous levels of total BACH1 protein.**Reactivity:** Human**Applications:** WB: 1:500~1:1000 IF: 1:100~1:500
ELISA: 1:20000**References:**

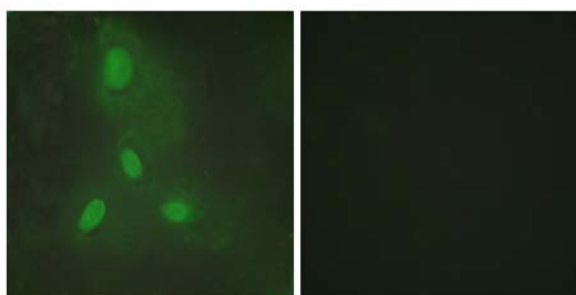
Blouin J.-L., Hum. Genet. 102:282-288(1998).

Ohira M., Genomics 47:300-306(1998).

Hattori M., Nature 405:311-319(2000).



Western blot analysis of extracts from HeLa cells, HepG2 cells and 293 cells, using BACH1 antibody.



Immunofluorescence analysis of HeLa cells, using BACH1 antibody.