

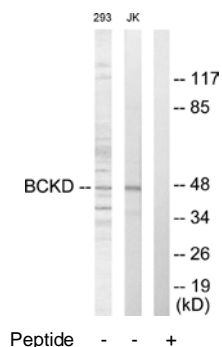


BCKD Antibody

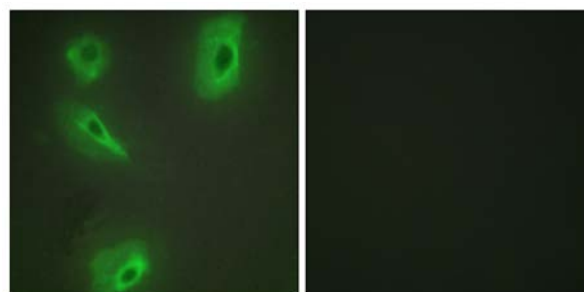
E11-10056C**Catalog Number:** E11-10056C**Concentration:** 1mg/ml**Swiss-Prot No.:** O14874**Other Names:** [3-methyl-2-oxobutanoate dehydrogenase [lipoamide]] kinase, mitochondrial [Precursor], EC 2.7.11.4, Branched-chain alpha-ketoacid dehydrogenase kinase, BCKDHKIN, BCKD-kinase, BCKDK**Storage/Stability:** Store at -20°C/1 year**Form of Antibody:** Rabbit IgG in phosphate buffered saline (without Mg²⁺ and Ca²⁺), pH 7.4, 150mM NaCl, 0.02% sodium azide and 50% glycerol.**Immunogen:** The antiserum was produced against synthesized peptide derived from Internal of human BCKD.**Purification:** The antibody was affinity-purified from rabbit antiserum by affinity-chromatography using epitope-specific immunogen.**Specificity:** BCKD antibody detects endogenous levels of total BCKD protein.**Reactivity:** Human, Mouse, Rat**Applications:** WB: 1:500~1:1000 IF: 1:100~1:500
ELISA: 1:20000**References:**

Chuang J.C., Submitted (SEP-1997) to the EMBL/GenBank/DDBJ databases.

The MGC Project Team, Genome Res. 14:2121-2127(2004).



Western blot analysis of extracts from 293 cells and Jurkat cells, using BCKD antibody.



Immunofluorescence analysis of HeLa cells, using BCKD antibody.

For Research Use Only