



Smad3 (Phospho-Ser208) Antibody

E11-1005A

Catalog Number: E11-1005A

Concentration: 1mg/ml

Swiss-Prot No.: P84022

Other Names: JV15-2, MAD-3, MADH3, Mad3, Mothers against DPP homolog 3, Mothers against decapentaplegic homolog 3, SMAD 3, Smad 3

All Sites: Human: Ser208; Mouse: Ser208; Rat: Ser208

Storage/Stability: Store at -20°C/1 year

Form of Antibody: Rabbit IgG in phosphate buffered saline (without Mg²⁺ and Ca²⁺), pH 7.4, 150mM NaCl, 0.02% sodium azide and 50% glycerol.

Immunogen: The antiserum was produced against synthesized phosphopeptide derived from human Smad3 around the phosphorylation site of serine 208 (N-L-S^P-P-N).

Purification: The antibody was affinity-purified from

rabbit antiserum by affinity-chromatography using epitope-specific phosphopeptide. The antibody against non-phosphopeptide was removed by chromatography using non-phosphopeptide corresponding to the phosphorylation site.

Specificity: Smad3 (Phospho-Ser208) antibody detects endogenous levels of Smad3 only when phosphorylated at serine 208.

Reactivity: Human, Mouse, Rat

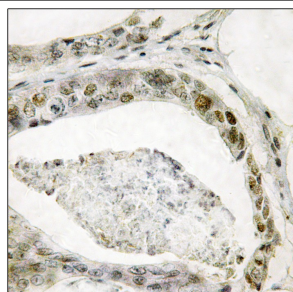
Applications: WB: 1:500~1:1000 IHC: 1:50~1:100
ELISA: 1:10000

References:

Wen Zhang. J. Biol. Chem., Dec 2000; 275: 39237.

Brendan D. Looyenga. Mol. Endocrinol., Jul 2007; 10.1210/me.2006-0402.

Jian Xu. J Androl, Mar 2003; 24: 192.

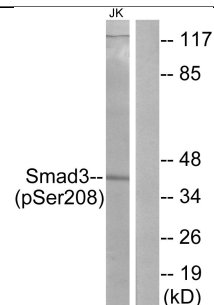
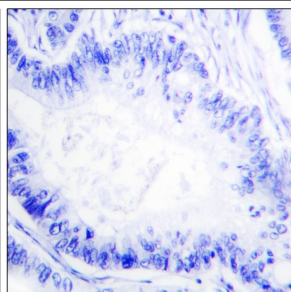


P-peptide

-

+

Immunohistochemistry analysis of paraffin-embedded human colon carcinoma tissue using Smad3 (Phospho-Ser208) antibody.



P-peptide - +

Western blot analysis of extracts from Jurkat cells, using Smad3 (Phospho-Ser208) antibody.

For Research Use Only