



Smad3 (Phospho-Ser213) Antibody

E11-1007A

Catalog Number: E11-1007A

Concentration: 1mg/ml

Swiss-Prot No.: P84022

Other Names: JV15-2, MAD-3, MADH3, Mad3, Mothers against DPP homolog 3, Mothers against decapentaplegic homolog 3, SMAD 3, Smad 3

All Sites: Human: Ser213; Mouse: Ser213; Rat: Ser213

Storage/Stability: Store at -20°C/1 year

Form of Antibody: Rabbit IgG in phosphate buffered saline (without Mg²⁺ and Ca²⁺), pH 7.4, 150mM NaCl, 0.02% sodium azide and 50% glycerol.

Immunogen: The antiserum was produced against synthesized phosphopeptide derived from human Smad3 around the phosphorylation site of serine 213

(P-M-S^P-P-A).

Purification: The antibody was affinity-purified from rabbit antiserum by affinity-chromatography using epitope-specific phosphopeptide. The antibody against non-phosphopeptide was removed by chromatography using non-phosphopeptide corresponding to the phosphorylation site.

Specificity: Smad3 (Phospho-Ser213) antibody detects endogenous levels of Smad3 only when phosphorylated at serine 213.

Reactivity: Human, Mouse, Rat

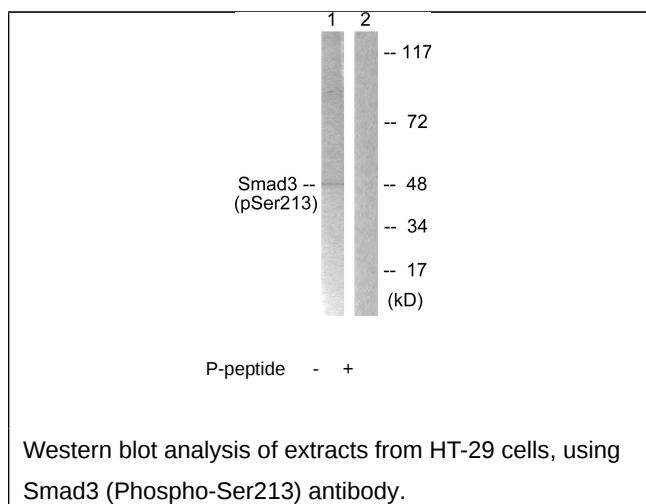
Applications: WB: 1:500~1:1000 ELISA: 1:5000

References:

Zhang Y., Nature 383:168-172(1996).

Melhuish T.A., J. Biol. Chem. 276:32109-32114(2001).

He W., Cell 125:929-941(2006).



For Research Use Only