



STAT5A (Phospho-Ser725) Antibody

E11-1008A

Catalog Number: E11-1008A

Concentration: 1mg/ml

Swiss-Prot No.: P42229

Other Names: MGF, MPF, Mammary gland factor, STA5A, STAT5, STAT5A, Signal transducer and activator of transcription 5A

All Sites: Human: Ser726; Rat: Ser725

Storage/Stability: Store at -20°C/1 year

Form of Antibody: Rabbit IgG in phosphate buffered saline (without Mg²⁺ and Ca²⁺), pH 7.4, 150mM NaCl, 0.02% sodium azide and 50% glycerol.

Immunogen: The antiserum was produced against synthesized phosphopeptide derived from human STAT5A around the phosphorylation site of serine 725 (A-P-S^p-P-V).

Purification: The antibody was affinity-purified from rabbit antiserum by affinity-chromatography using

epitope-specific phosphopeptide. The antibody against non-phosphopeptide was removed by chromatography using non-phosphopeptide corresponding to the phosphorylation site.

Specificity: STAT5A (Phospho-Ser725) antibody detects endogenous levels of STAT5A only when phosphorylated at serine 725.

Reactivity: Human, Rat

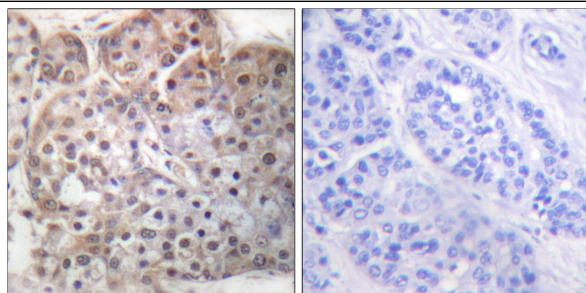
Applications: WB: 1:500~1:1000 IHC: 1:50~1:100
IF: 1:100~1:500 ELISA: 1:20000

References:

Hou J., Immunity 2:321-329(1995).

Litterst C.M., J. Biol. Chem. 278:45340-45351(2003).

Martens N., J. Biol. Chem. 280:13817-13823(2005).



P-peptide - +

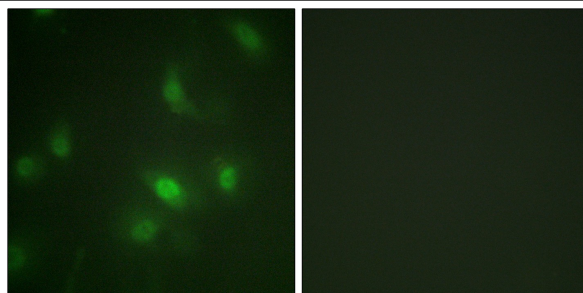
Immunohistochemistry analysis of paraffin-embedded human breast carcinoma tissue using STAT5A (Phospho-Ser725) antibody.



EGF + +
P-peptide - +

Western blot analysis of extracts from Jurkat cells, treated with EGF (200ng/ml, 30mins), using STAT5A (Phospho-Ser725) antibody.

For Research Use Only



P-peptide	-	+
-----------	---	---

Immunofluorescence analysis of HepG2 cells, using
STAT5A (Phospho-Ser725) antibody.