



## AKAP10 Antibody

E11-10110C

**Catalog Number:** E11-10110C

**Concentration:** 1mg/ml

**Swiss-Prot No.:** O43572

**Other Names:** A kinase anchor protein 10, mitochondrial [Precursor], Protein kinase A-anchoring protein 10, PRKA10, Dual specificity A kinase-anchoring protein 2, D-AKAP-2, AKAP10

**Storage/Stability:** Store at -20°C/1 year

**Form of Antibody:** Rabbit IgG in phosphate buffered saline (without  $Mg^{2+}$  and  $Ca^{2+}$ ), pH 7.4, 150mM NaCl, 0.02% sodium azide and 50% glycerol.

**Immunogen:** The antiserum was produced against synthesized peptide derived from Internal of human AKAP10.

**Purification:** The antibody was affinity-purified from rabbit antiserum by affinity-chromatography using epitope-specific immunogen.

**Specificity:** AKAP10 antibody detects endogenous levels of total AKAP10 protein.

**Reactivity:** Human, Mouse, Rat

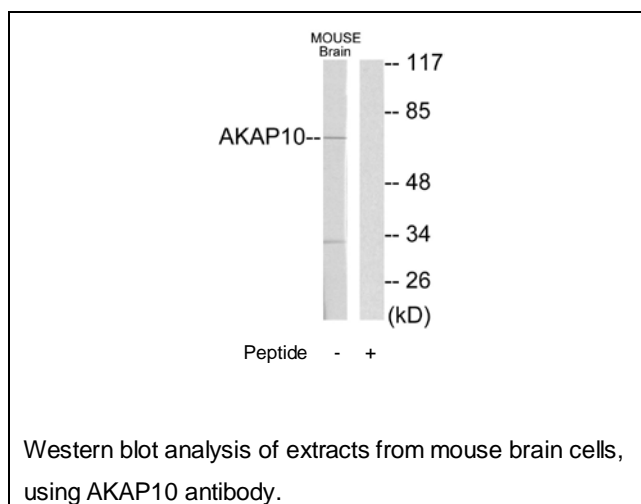
**Applications:** WB: 1:500~1:1000 ELISA: 1:10000

**References:**

Wang L., Proc. Natl. Acad. Sci. U.S.A. 98:3220-3225(2001).

Chatterjee T.K., Submitted (DEC-1997) to the EMBL/GenBank/DDBJ databases.

The MGC Project Team, Genome Res. 14:2121-2127(2004).



**For Research Use Only**