



## LMX1B Antibody

E11-10143C

**Catalog Number:** E11-10143C

**Concentration:** 1mg/ml

**Swiss-Prot No.:** O60663

**Other Names:** LIM homeobox transcription factor 1 beta, LIM/homeobox protein LMX1B, LIM/homeobox protein 1.2, LMX-1.2, LMX1B

**Storage/Stability:** Store at -20°C/1 year

**Form of Antibody:** Rabbit IgG in phosphate buffered saline (without  $Mg^{2+}$  and  $Ca^{2+}$ ), pH 7.4, 150mM NaCl, 0.02% sodium azide and 50% glycerol.

**Immunogen:** The antiserum was produced against synthesized peptide derived from internal of human

LMX1B.

**Purification:** The antibody was affinity-purified from rabbit antiserum by affinity-chromatography using epitope-specific immunogen.

**Specificity:** LMX1B antibody detects endogenous levels of total LMX1B protein.

**Reactivity:** Human, Mouse

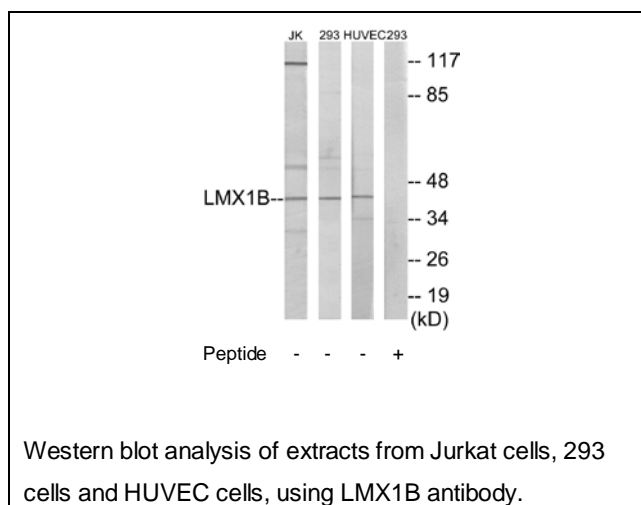
**Applications:** WB: 1:500~1:1000 ELISA: 1:40000

**References:**

Dreyer S.D., Nat. Genet. 19:47-50(1998).

Vollrath D., Hum. Mol. Genet. 7:1091-1098(1998).

McIntosh I., Am. J. Hum. Genet. 63:1651-1658(1998).



**For Research Use Only**