



LAT3 Antibody

E11-10170C

Catalog Number: E11-10170C

Concentration: 1mg/ml

Swiss-Prot No.: O75387

Other Names: L-type amino acid transporter 3, LAT3, large neutral amino acids transporter small subunit 3, prostate cancer overexpressed gene 1 protein, solute carrier family 43 member 1

Storage/Stability: Store at -20°C/1 year

Form of Antibody: Rabbit IgG in phosphate buffered saline (without Mg^{2+} and Ca^{2+}), pH 7.4, 150mM NaCl, 0.02% sodium azide and 50% glycerol.

Immunogen: The antiserum was produced against

synthesized peptide derived from internal of human LAT3.

Purification: The antibody was affinity-purified from rabbit antiserum by affinity-chromatography using epitope-specific immunogen.

Specificity: LAT3 antibody detects endogenous levels of total LAT3 protein.

Reactivity: Human

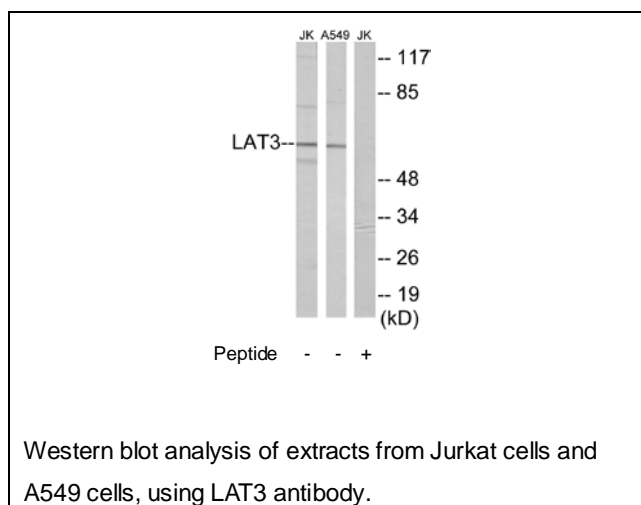
Applications: WB: 1:500~1:1000 ELISA: 1:20000

References:

Cole K.A., Genomics 51:282-287(1998).

Babu E., J. Biol. Chem. 278:43838-43845(2003).

Chuaqui R.F., Urology 50:302-307(1997).



For Research Use Only