



## Vinculin (Phospho-Tyr821) Antibody

E11-1017A

**Catalog Number:** E11-1017A

**Concentration:** 1mg/ml

**Swiss-Prot No.:** Q64727

**Other Names:** Metavinculin, VCL, VINC

**All Sites:** Human: Tyr821; Mouse: Tyr821; Rat: Tyr822

**Storage/Stability:** Store at -20°C/1 year

**Form of Antibody:** Rabbit IgG in phosphate buffered saline (without  $Mg^{2+}$  and  $Ca^{2+}$ ), pH 7.4, 150mM NaCl, 0.02% sodium azide and 50% glycerol.

**Immunogen:** The antiserum was produced against synthesized phosphopeptide derived from human Vinculin around the phosphorylation site of tyrosine 821 (S-G-Y<sup>P</sup>-R-I).

**Purification:** The antibody was affinity-purified from rabbit antiserum by affinity-chromatography using epitope-specific phosphopeptide. The antibody against

non-phosphopeptide was removed by chromatography using non-phosphopeptide corresponding to the phosphorylation site.

**Specificity:** Vinculin (Phospho-Tyr821) antibody detects endogenous levels of Vinculin only when phosphorylated at tyrosine 821.

**Reactivity:** Human, Mouse, Rat

**Applications:** IHC: 1:50~1:100 IF: 1:100~1:500

ELISA: 1:20000

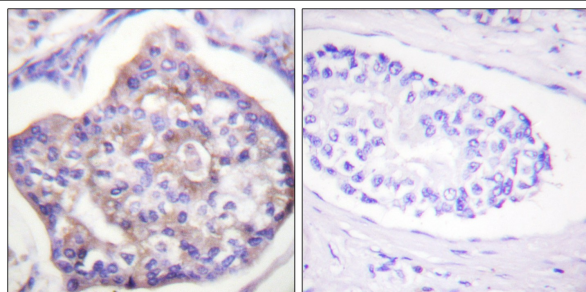
### References:

Tricia A. Holwell, J. Lipid Res., Aug 1999; 40: 1440.

M Galou, J. Cell Biol., May 1996; 133: 853.

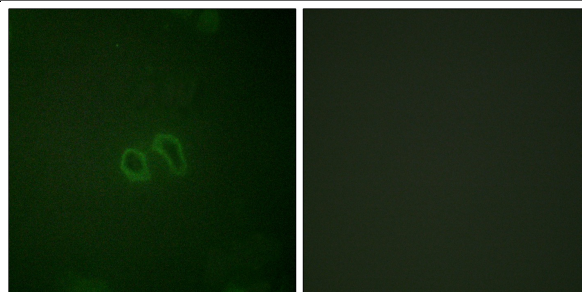
PV Hornbeck, J. Immunol., Oct 1993; 151: 4013.

M Ishizaki, Invest. Ophthalmol. Vis. Sci., Nov 1993; 34: 3320.



P-peptide - +

Immunohistochemistry analysis of paraffin-embedded human breast carcinoma tissue using Vinculin (Phospho-Tyr821) antibody.



P-peptide - +

Immunofluorescence analysis of HepG2 cells, using Vinculin (Phospho-Tyr821) antibody.

**For Research Use Only**