



CIB2 Antibody

E11-10194C

Catalog Number: E11-10194C

Concentration: 1mg/ml

Swiss-Prot No.: O75838

Other Names: Calcium and integrin-binding family member 2, Kinase-interacting protein 2, KIP 2, CIB2, KIP2

Storage/Stability: Store at -20°C/1 year

Form of Antibody: Rabbit IgG in phosphate buffered saline (without Mg^{2+} and Ca^{2+}), pH 7.4, 150mM NaCl, 0.02% sodium azide and 50% glycerol.

Immunogen: The antiserum was produced against synthesized peptide derived from internal of human CIB2.

Purification: The antibody was affinity-purified from

rabbit antiserum by affinity-chromatography using epitope-specific immunogen.

Specificity: CIB2 antibody detects endogenous levels of total CIB2 protein.

Reactivity: Human (Identities = 100%, Positives = 100%);

Mouse (Identities = 100%, Positives = 100%);

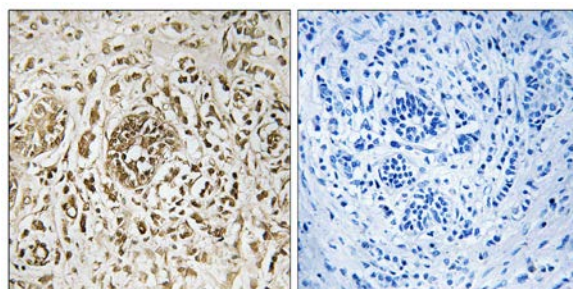
Rat (Identities = 100%, Positives = 100%)

Applications: IHC: 1:50~1:100 ELISA: 1:5000

References:

Seki N., Biochim. Biophys. Acta 1444:143-147(1999).

The MGC Project Team, Genome Res. 14:2121-2127(2004).



Peptide

-

+

Immunohistochemistry analysis of paraffin-embedded human breast carcinoma tissue, using CIB2 antibody.

For Research Use Only