



ABL1 Antibody

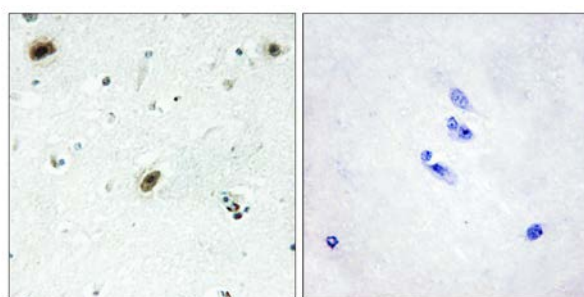
E11-10256C

Catalog Number: E11-10256C**Concentration:** 1mg/ml**Swiss-Prot No.:** P00519**Other Names:** ABL1, EC 2.7.1.112, JTK7, Proto-oncogene tyrosine-protein kinase ABL1, c-ABL, p150**Storage/Stability:** Store at -20°C/1 year**Form of Antibody:** Rabbit IgG in phosphate buffered saline (without Mg^{2+} and Ca^{2+}), pH 7.4, 150mM NaCl, 0.02% sodium azide and 50% glycerol.**Immunogen:** The antiserum was produced against synthesized peptide derived from internal of human ABL1.**Purification:** The antibody was affinity-purified from rabbit antiserum by affinity-chromatography using epitope-specific immunogen.**Specificity:** ABL1 antibody detects endogenous levels of total ABL1 protein.**Reactivity:** Human, Mouse, Rat**Applications:** WB: 1:500~1:1000 IHC: 1:50~1:100
ELISA: 1:20000**References:**

Chisoe S.L., Genomics 27:67-82(1995).

Wisniewski D., Blood 93:2707-2720(1999).

Lin W.-H., Genomics 74:12-20(2001).

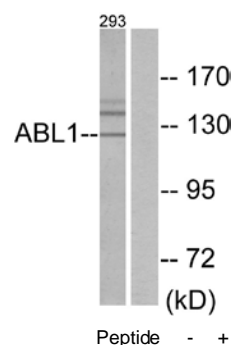


Peptide

-

+

Immunohistochemistry analysis of paraffin-embedded human brain tissue using ABL1 antibody.



Western blot analysis of extracts from 293 cells, using ABL1 antibody.