



## Heparin Cofactor II Antibody

E11-10281C

**Catalog Number:** E11-10281C**Concentration:** 1mg/ml**Swiss-Prot No.:** P05546**Other Names:** Heparin cofactor 2 [Precursor], Heparin cofactor II, HC-II, Protease inhibitor leuserpin 2, HLS2, SERPIND1, HCF2**Storage/Stability:** Store at -20°C/1 year**Form of Antibody:** Rabbit IgG in phosphate buffered saline (without  $Mg^{2+}$  and  $Ca^{2+}$ ), pH 7.4, 150mM NaCl, 0.02% sodium azide and 50% glycerol.**Immunogen:** The antiserum was produced against synthesized peptide derived from internal of human Heparin Cofactor II.**Purification:** The antibody was affinity-purified from

rabbit antiserum by affinity-chromatography using epitope-specific immunogen.

**Specificity:** Heparin Cofactor II antibody detects endogenous levels of total Heparin Cofactor II protein.**Reactivity:** Human (Identities = 100%, Positives = 100%);

Mouse (Identities = 100%, Positives = 100%);

Rat (Identities = 100%, Positives = 100%)

**Applications:** IHC: 1:50~1:100 IF: 1:100~1:500

ELISA: 1:5000

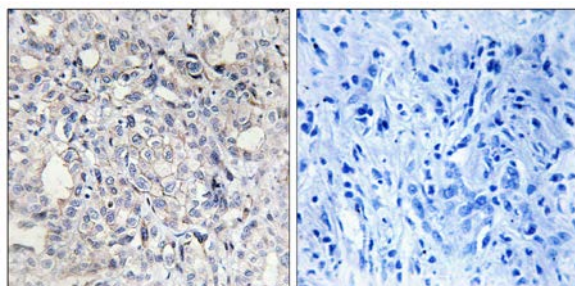
**References:**

Blinder M.A., Biochemistry 27:752-759(1988).

Herzog R., Biochemistry 30:1350-1357(1991).

Collins J.E., Genome Biol.

5:RESEARCH84.1-RESEARCH84.11(2004).

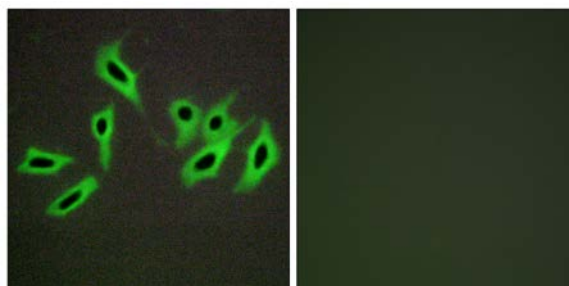


Peptide

-

+

Immunohistochemistry analysis of paraffin-embedded human liver carcinoma tissue, using Heparin Cofactor II antibody.



Peptide

-

+

Immunofluorescence analysis of HepG2 cells, using Heparin Cofactor II antibody.

**For Research Use Only**